



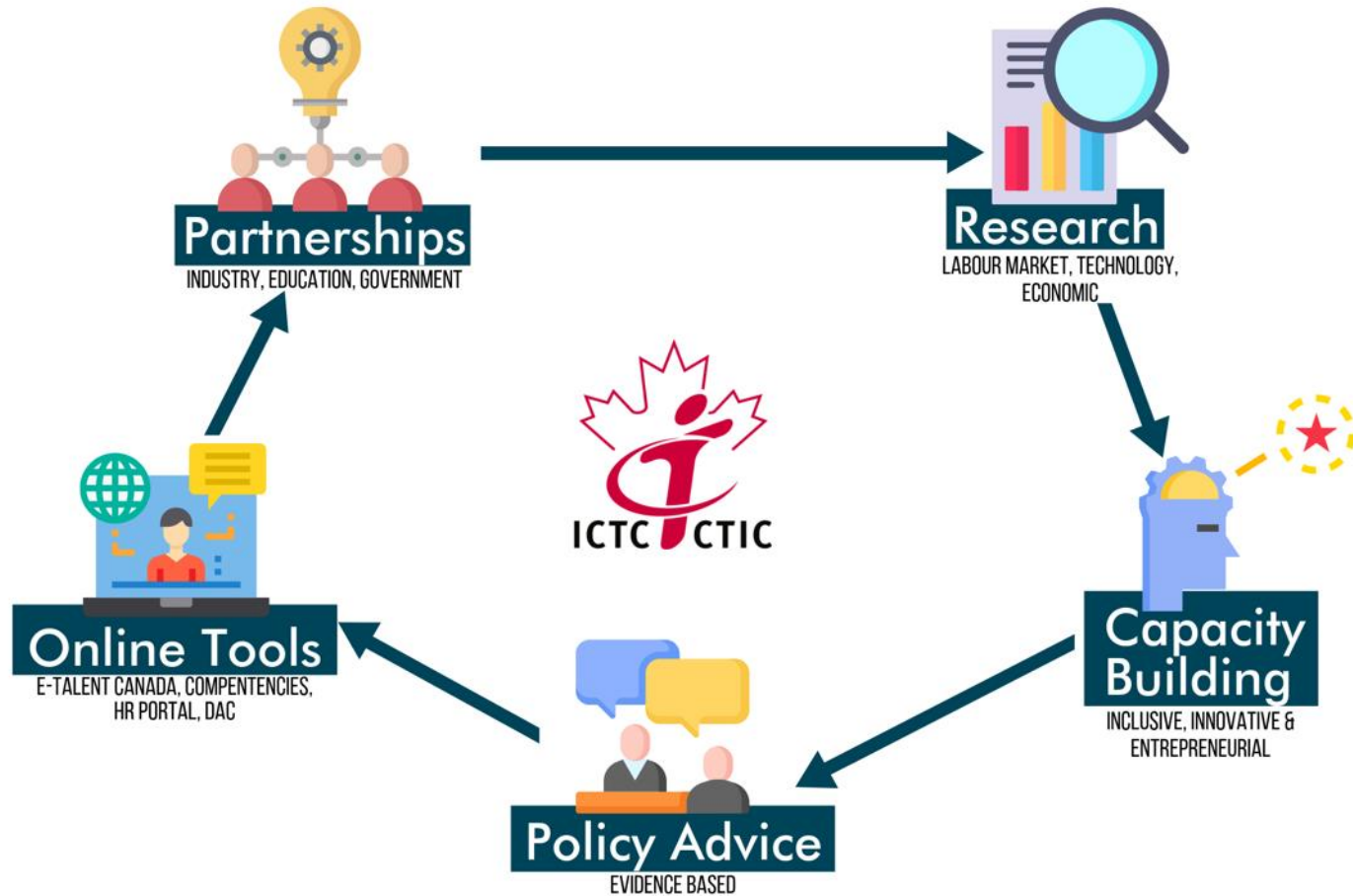
**THE INTELLIGENCE ECONOMY –  
WHERE TECHNOLOGY,  
MARKETS & HUMANITY  
INTERSECT**

**THE INFORMATION AND COMMUNICATIONS TECHNOLOGY COUNCIL**

**Global Forum 2019 | Angers | October 7<sup>th</sup> 2019**

**Namir Anani  
President & CEO  
[@NamirAnani\\_ICTC](#)**

## Strengthening Canada's Digital Advantage in a Global Economy





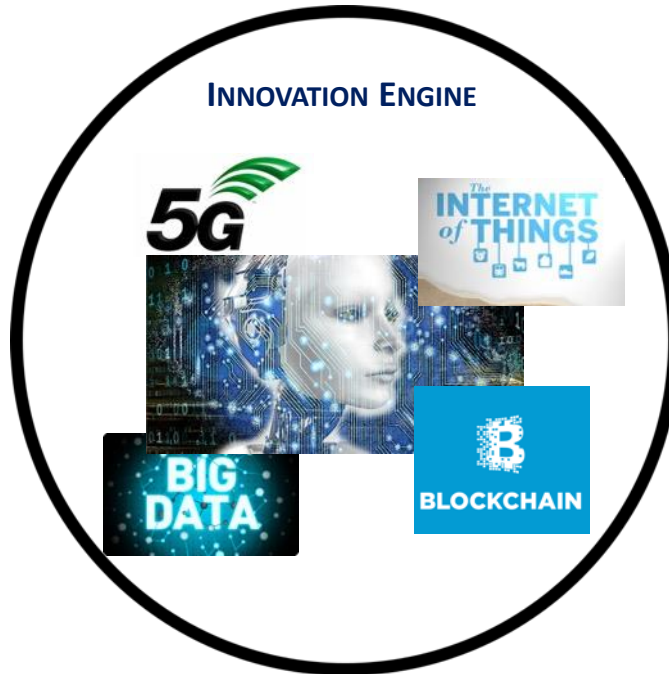
# GLOBAL FORCES – NO ORDINARY DISRUPTION



The age of urbanization



Environmental Trends



Shifting Trade Dynamics



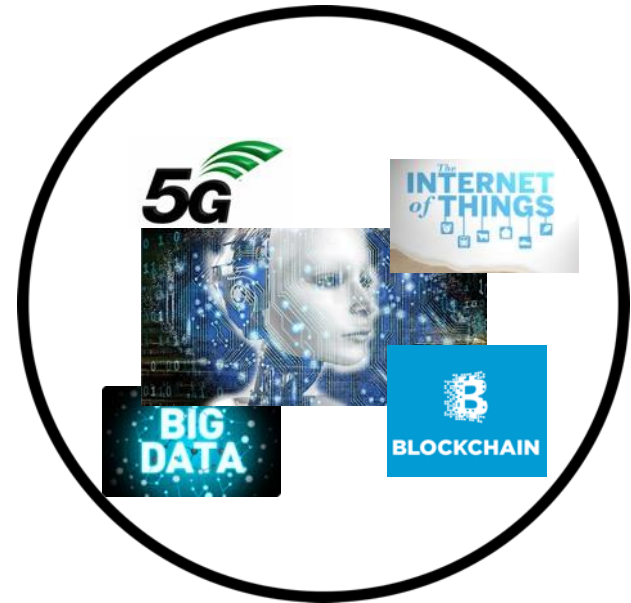
Demographic Shifts



# APPLICATIONS OF EXPONENTIAL TECHNOLOGIES

-  Travel
-  Transport and logistics
-  Retail
-  Automotive and assembly
-  High tech
-  Oil and gas
-  Chemicals
-  Media and entertainment
-  Basic materials
-  Agriculture
-  Consumer packaged goods
-  Banking
-  Healthcare systems and services
-  Public and social sectors
-  Telecommunications
-  Pharmaceuticals and medical products
-  Insurance
-  Advanced electronics/semiconductors
-  Aerospace and defense

INNOVATION ENGINE = (AI, 5G, IOT, & BC)

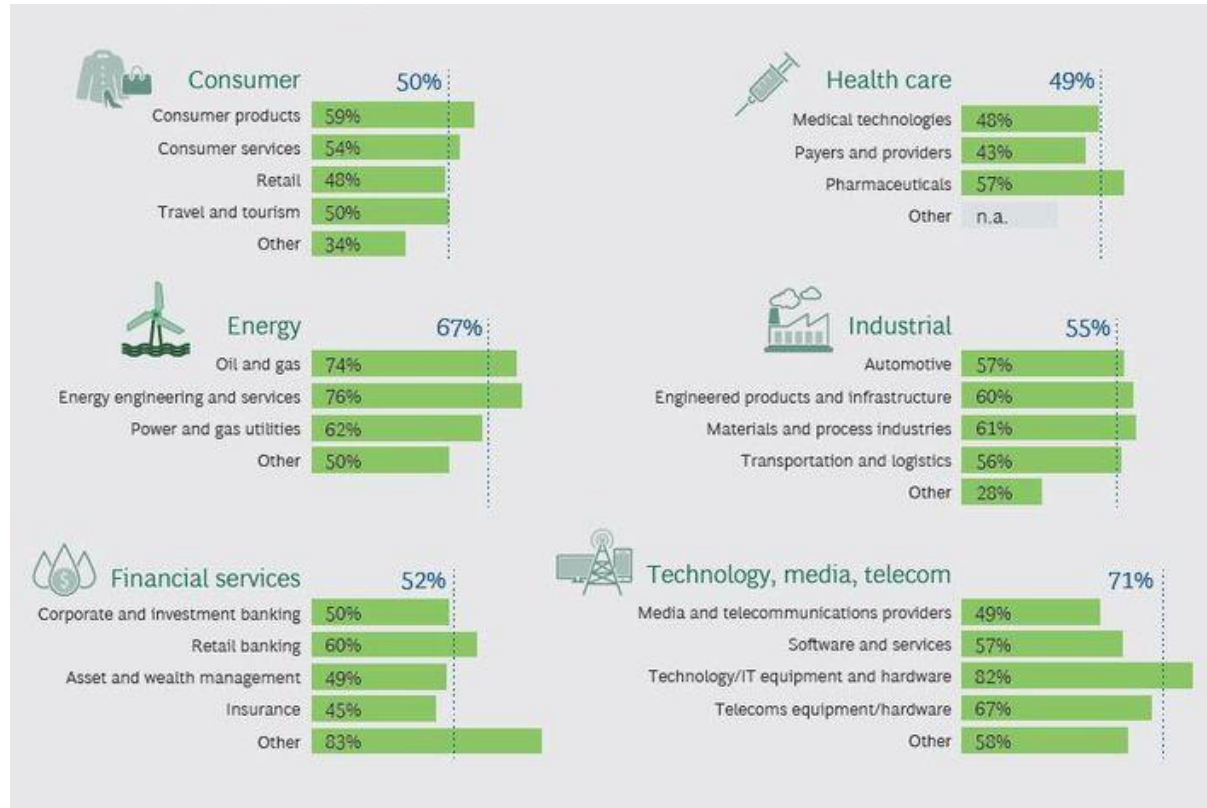


AI alone is estimated to increase global GDP by 14% in 2030, or 15.7 Trillion USD – Source

PwC-



# AI ADOPTION WITHIN INDUSTRIES



Source: Boston Consulting Group 'Mind the (AI) Gap

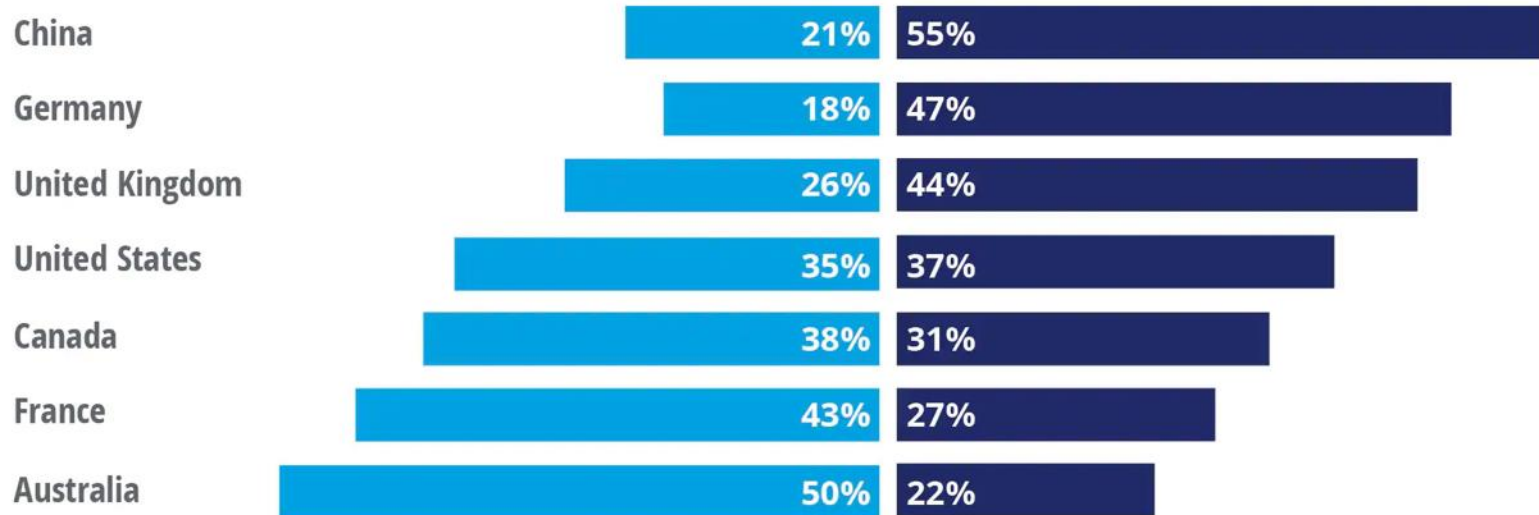


## STRATEGIC IMPORTANCE OF AI

### AI early adopters in some countries are more likely to use AI to create a strong competitive advantage

■ Catch up/Keep on par

■ Widen lead/Leapfrog ahead



Note: Not shown—respondents who take the more neutral stance that they're "edging slightly ahead."

Source: Deloitte State of AI in the Enterprise survey, 2nd Edition, 2018.

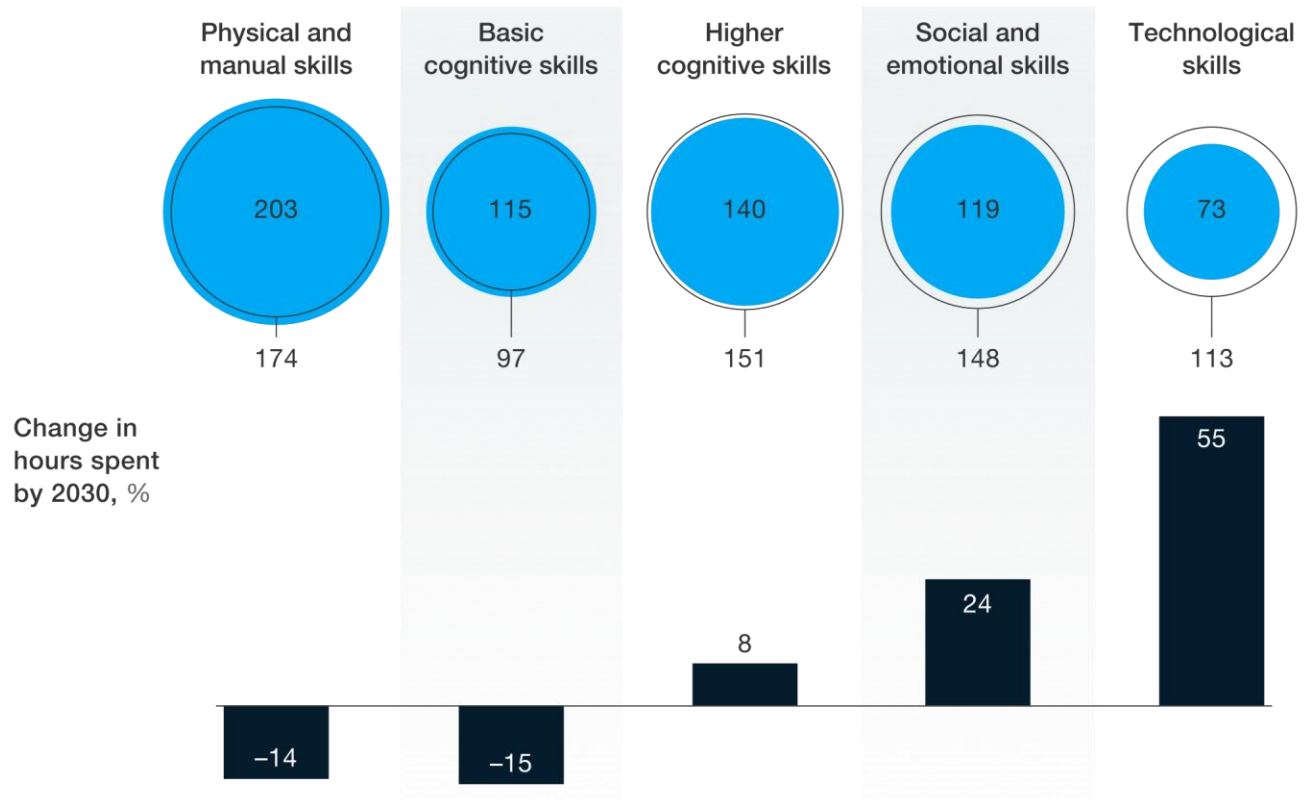


# SHIFTING SKILLS

Automation and artificial intelligence will accelerate the shift in skills that the workforce needs.

Total hours worked in Europe and United States, 2016 vs 2030 estimate, billion

● 2016 ○ 2030





# Q & A

For more information, visit:

[www.ictc-ctic.ca](http://www.ictc-ctic.ca)



[@NamirAnani\\_ICTC](https://twitter.com/NamirAnani_ICTC)

[@ICTC\\_CTIC](https://twitter.com/ICTC_CTIC)