



Good Infrastructure - a key to  
sustainable growth

Henrik Vuorinen,  
CEO, Port of Luleå



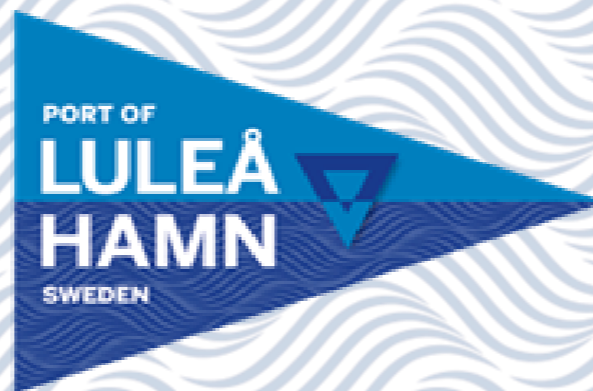


# ***The Port of Luleå***

**65°32'58.0N 22°14'21.0 E**

*"The most northern public port in Sweden"*

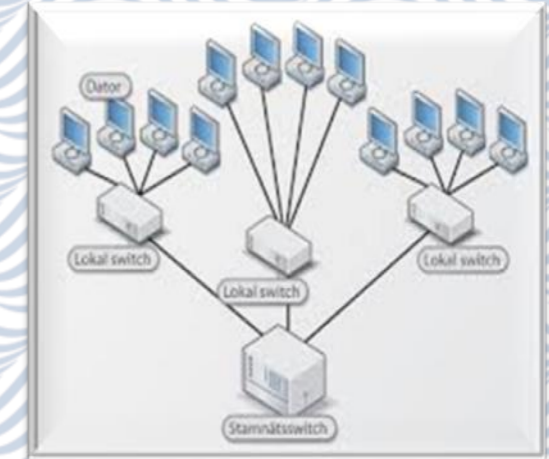
***A European TEN-T Core harbor***



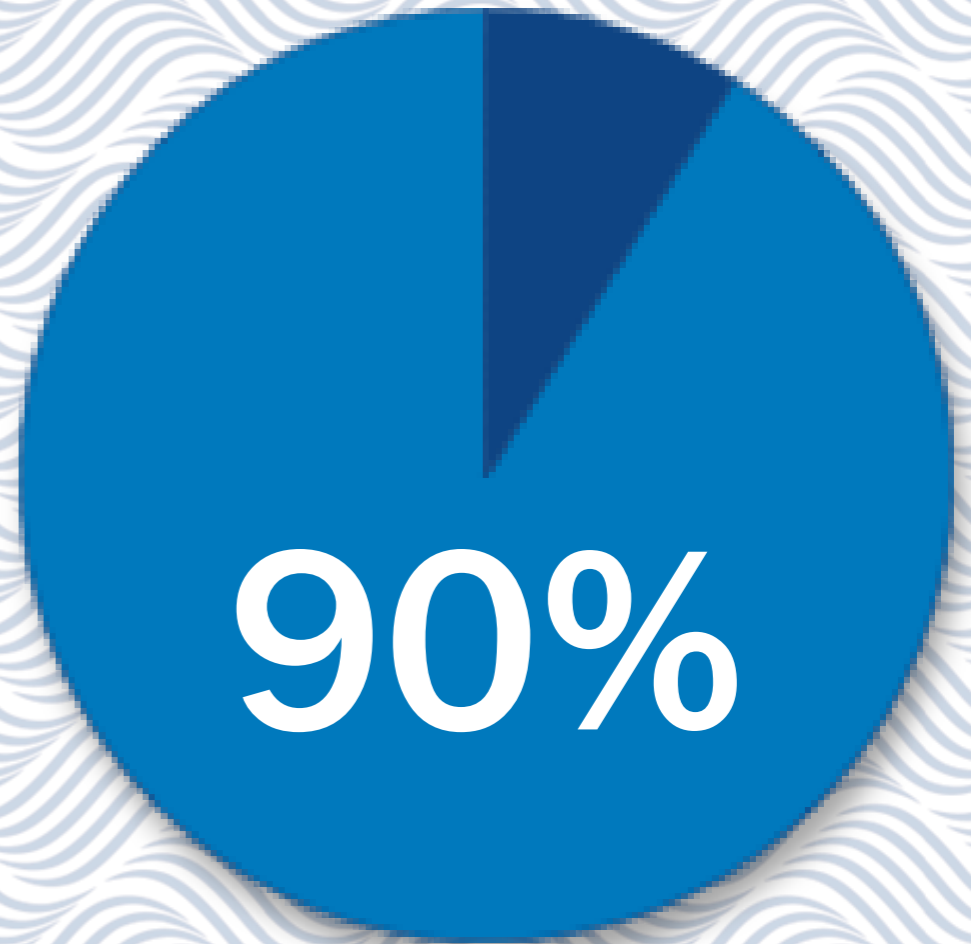
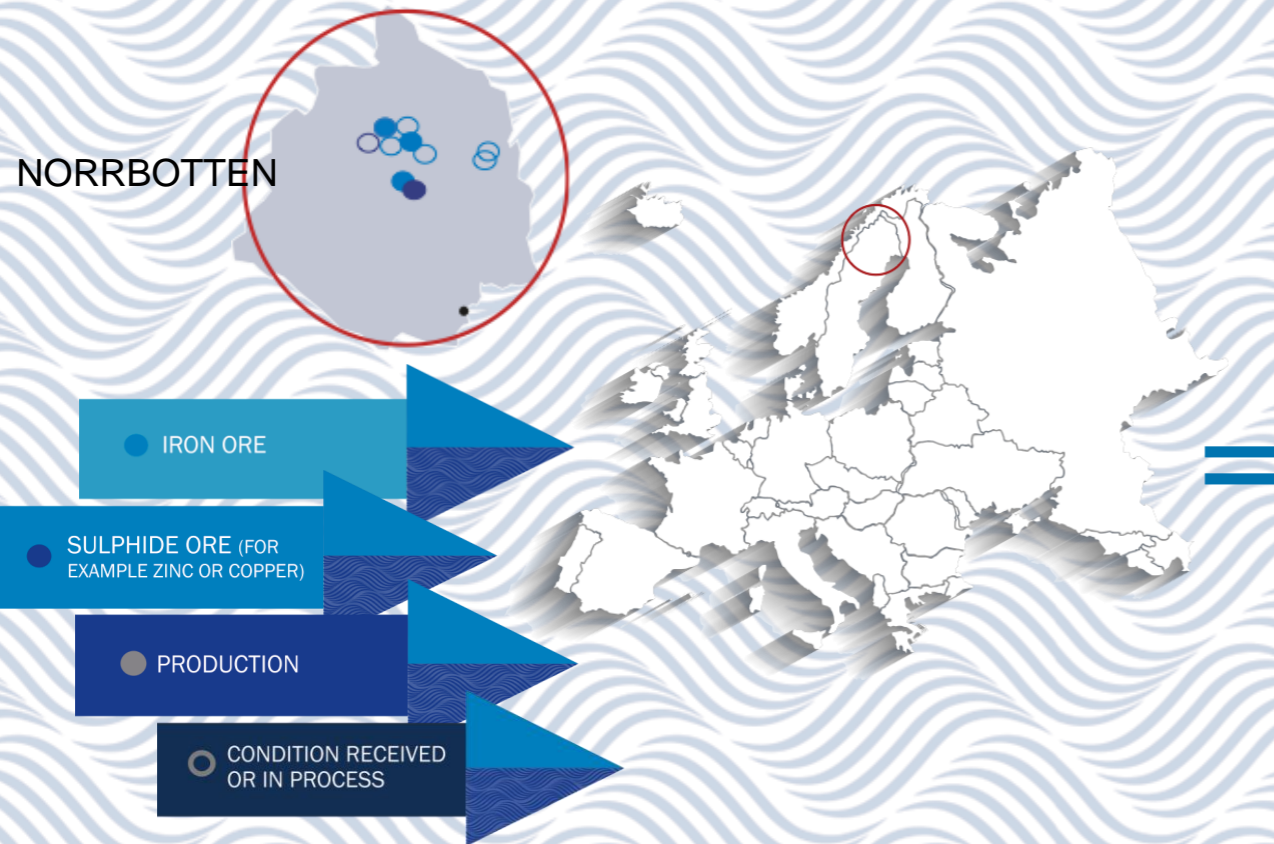




# Good Infrastructure - a Key to Sustainable Growth







**More than 3,5 billion € invested the last years**

90% of the EU's iron ore production is located in the Arctic region connected to the Port of Luleå.

~40% increase in volume the coming 5 years

Increased ore and mineral shipments

EU Sulphur Directive means higher transport costs

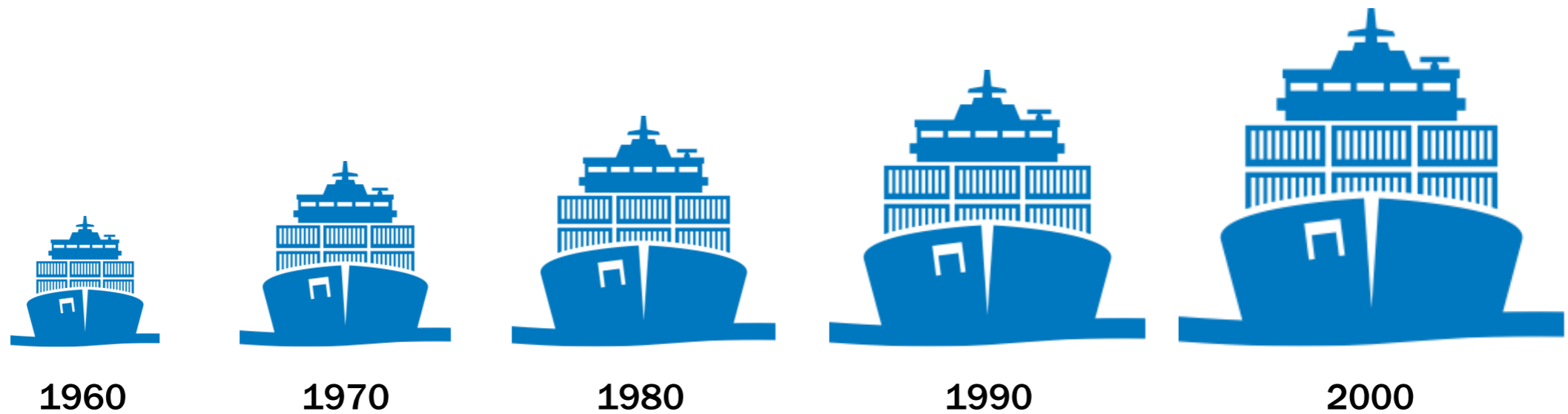


Land rise (post-glacial rebound) about 1 centimeter per year

More and more cargo demands bigger and bigger ships



# Ships get longer and wider



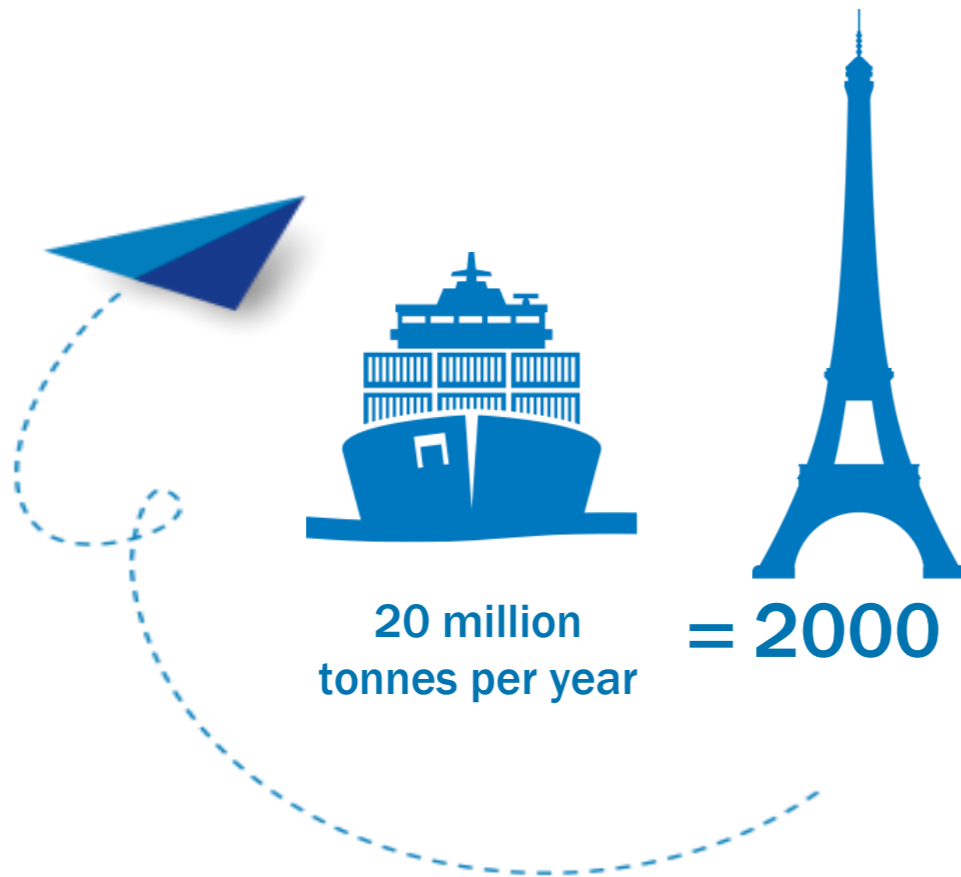
Today's ships carry >7times more cargo than in the seventies

# Malmporten – The Iron Ore Port of Europe



20 million cubic metres of dredged material

= A 4-lane highway from Oulu to Munich



20 million tonnes per year

= 2000

Cost saving for transports ~40%

Total investment >330 million €



# The Malmporten project opens the entire Gulf of Bothnia for larger vessels





# Green shipping





Carbon dioxide emissions

Waste water

Emissions

Transports

LNG-Terminal

Green waste facilities

-40% reduction

From road to sea



This is one example how  
"Good Infrastructure is a Key to  
Sustainable Growth"



Thank you for listening!

