

OPEN DATA



Image Source: <http://www.wired.co.uk/news/archive/2012-05/21/open-data-institute-plans>

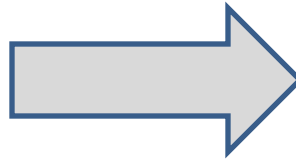
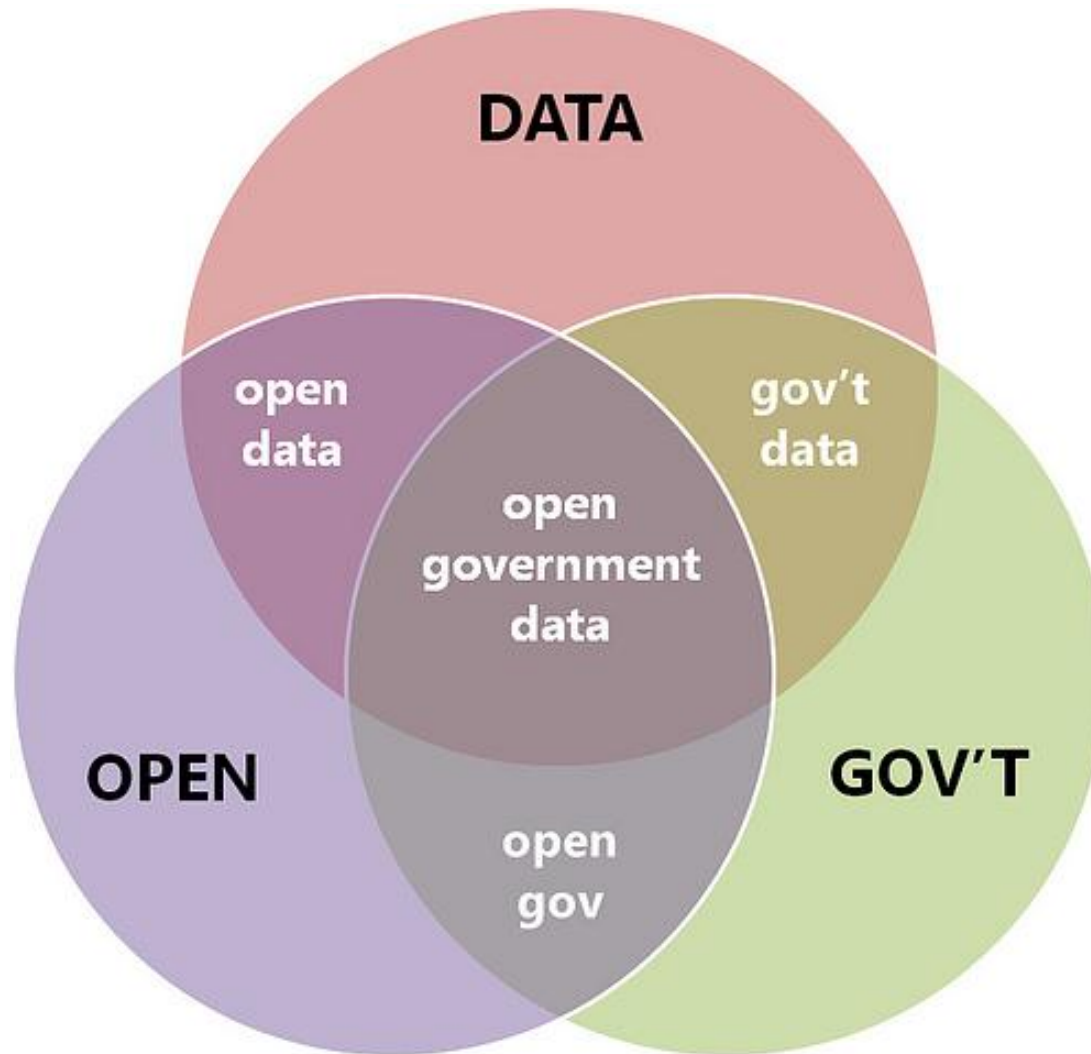


Image Source: <http://www.nicva.org/news/open-data-service>

- 1. Technically open:** available in a machine-readable standard format
- 2. Legally open:** explicitly licensed in a way that permits commercial and non-commercial use and re-use without restrictions

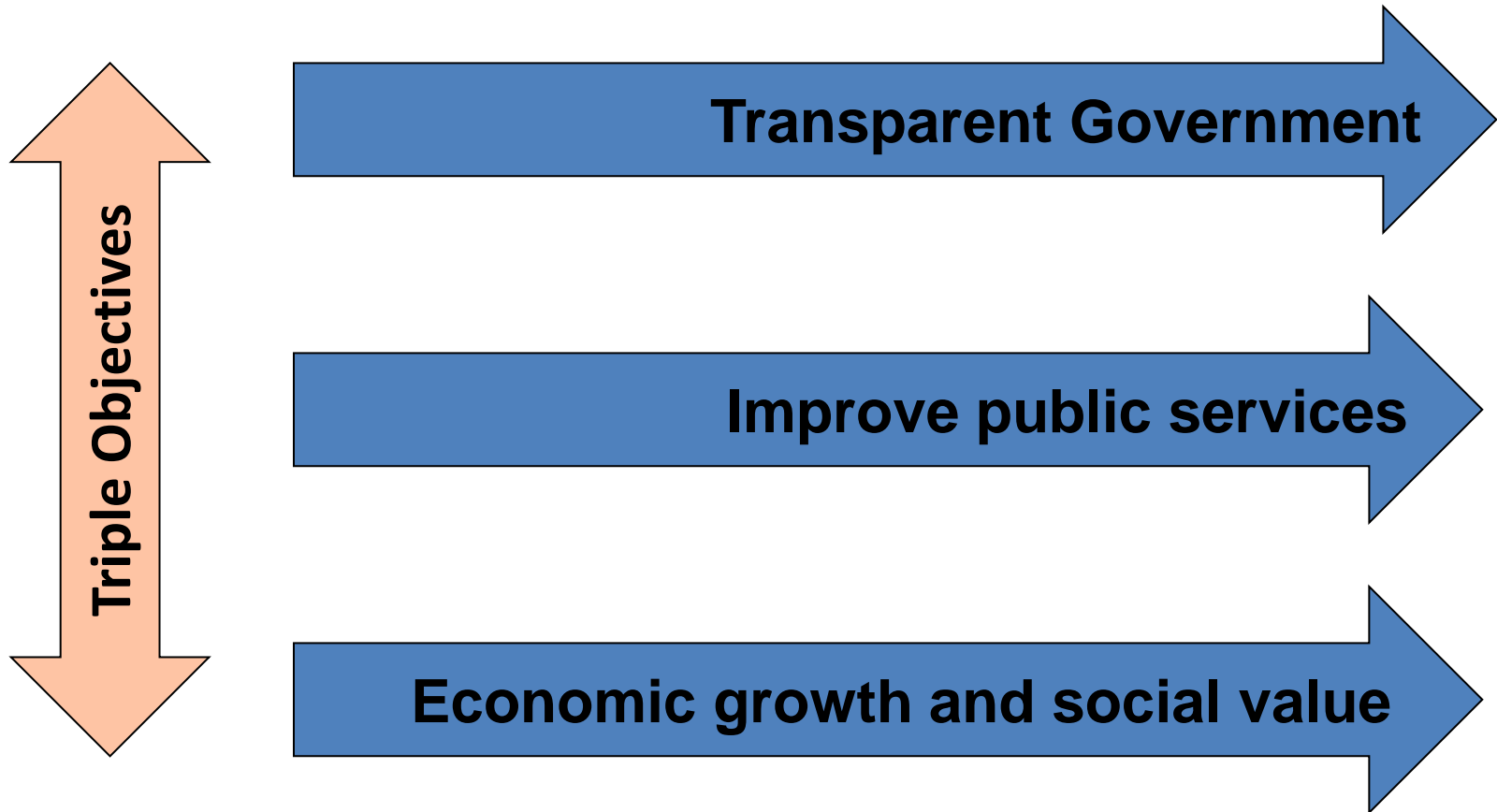
Relation between Open Data and Open Government?



Benefits of Open Government Data



Typical Policy Drivers for Open Data




Dashboard of local council performance


making local government more transparent

Oxford City Council

Website <http://www.oxford.gov.uk/>  [Twitter feed](#)

Authority Type District 

County Council Oxfordshire County Council

Address Town Hall, Blue Boar Street, Oxford OX1 4EY

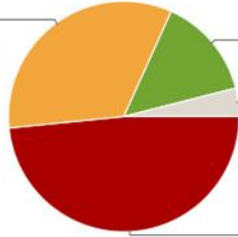
Telephone 01865 249 811

Chief Executive Peter Sloman

Population 153,900 (Source: ONS Crown Copyright)

Police Force Thames Valley Police

Wikipedia Url http://en.wikipedia.org/wiki/Oxford_City_Council




Liberal Democrat

Green

Independent Working Cl.

Labour

Other info

<p>External links</p> <ul style="list-style-type: none"> • WhatDoTheyKnow.com Fol requests  feed • Office for National Statistics page • eGovernment Register page • ONS SNAC ID: 38UC 	<p>Statistics</p> <p>Happiness Survey 2008 more data»</p> <p>% who are satisfied with their local area as a place to live 86.5</p> <p>Local Government Pension Funds 2006-07 more data»</p> <p>Market Value - at end of year £000 1048951</p>	<p>Online services</p> <p><input type="text"/> <input type="button" value="Search"/></p> <p>See full list</p>
--	--	--

Current councillors

- [Mohammed Niaz Abbasi](#) (Labour)
- [Mohammed Altaf-Khan](#) (Liberal Democrat)
- [Alan Edmund Armitage](#) (Liberal Democrat)
- [Antonia Bance](#) (Labour)
- [Laurence Peter Baxter](#) (Labour)
- [Elise Benjamin](#) (Green)
- [STEPHEN](#) [Stephen Thomas Brown](#) (Liberal Democrat)
- [Clark L Brundin](#) (Liberal Democrat)
- [James Robert Martin Campbell](#) (Liberal Democrat)

Council Committees

Showing only currently active committees. *Include inactive committees*

- **Audit and Governance Committee** (next meeting: [NEW](#) Jan 26 2010, 5.00PM)
- **Central South and West Area Committee** (next meeting: [NEW](#) Jan 12 2010, 5.30PM)
- **City Executive Board** (next meeting: Dec 15 2009, 5.00PM)
- **Communities & Partnership Scrutiny Committee** (next meeting: Feb 10 2010)

Wards

- Barton And Sandhills
- Blackbird Leys
- Carfax
- Churchill
- Cowley
- Cowley Marsh
- Headington
- Headington Hill And Northway
- Hinksey Park
- Holywell
- Iffley Fields

Crowd-sourcing to improve official data

NOVAM-Viewer
Help (OSM-Wiki)

Go to

Loading ...

Bus Stop | 471490514 v3

<p>highway</p> <p>name</p> <p>n:AtcoCode</p> <p>n:Bearing</p> <p>n:CommonName</p> <p>n:Crossing</p> <p>n:Landmark</p> <p>n:PlusbusZoneRef</p> <p>n:ShortCommonName</p> <p>n:Street</p> <p>note</p> <p>shelter</p> <p>source</p>	<p>bus_stop</p> <p>Mount Pleasant Police Station</p> <p>2290YHA00806</p> <p>NW</p> <p>Mount Pleasant Police Station</p> <p>Dansom Lane</p> <p>Police Station</p> <p>HULL</p> <p>Mount Pleasant</p> <p>Mount Pleasant</p> <p style="background-color: yellow;">no code on sign; moved S; bearing should be SE</p> <p style="background-color: yellow;">This note needs to be removed to complete the stop</p> <p>no</p> <p>naptan + survey</p>
--	---

Map Key

- Surveyed stop which has no NaPTAN tags
- NaPTAN Stop that has not been checked yet
- Stop with problems described in the note tag
- Stop has been checked and is okay
- Stop from NaPTAN which is not on the ground
- All other stops
- Arrows indicate the value of naptan:Bearing

Bus stops last updated: null

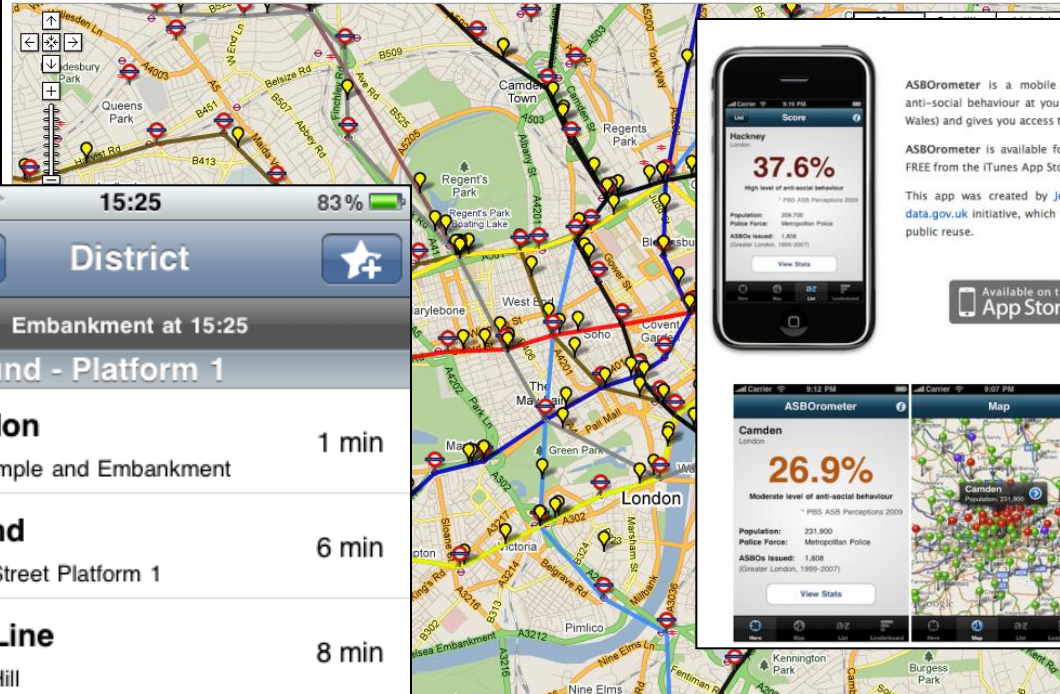
Colour Scheme

Hull (Chris Hill)

Better Information services to the public

Live train map for the London Underground, by Matthew Somerville

Data collected: Tue, 15 Mar 2011 15:24:03 +0000



District	
Embarkment at 15:25	
Westbound - Platform 1	
Wimbledon	1 min
Between Temple and Embarkment	
Richmond	6 min
At Cannon Street Platform 1	
District Line	8 min
Left Tower Hill	
Wimbledon	10 min
Between Aldgate East and Tower Hill	
Richmond	19 min
At Stepney Green Platform 1	

Download Flowd - location based app for trance music lovers!



ASBOrometer is a mobile application that measures levels of anti-social behaviour at your current location (within England and Wales) and gives you access to key local ASB statistics.

ASBOrometer is available for iPhone and Android phones. Get it FREE from the iTunes App Store or Android Market now!

This app was created by Jeff Gelfelt and made possible by the data.gov.uk initiative, which is opening up UK government data for public reuse.



Transport, public facilities and crime data among most downloaded Smartphone Apps

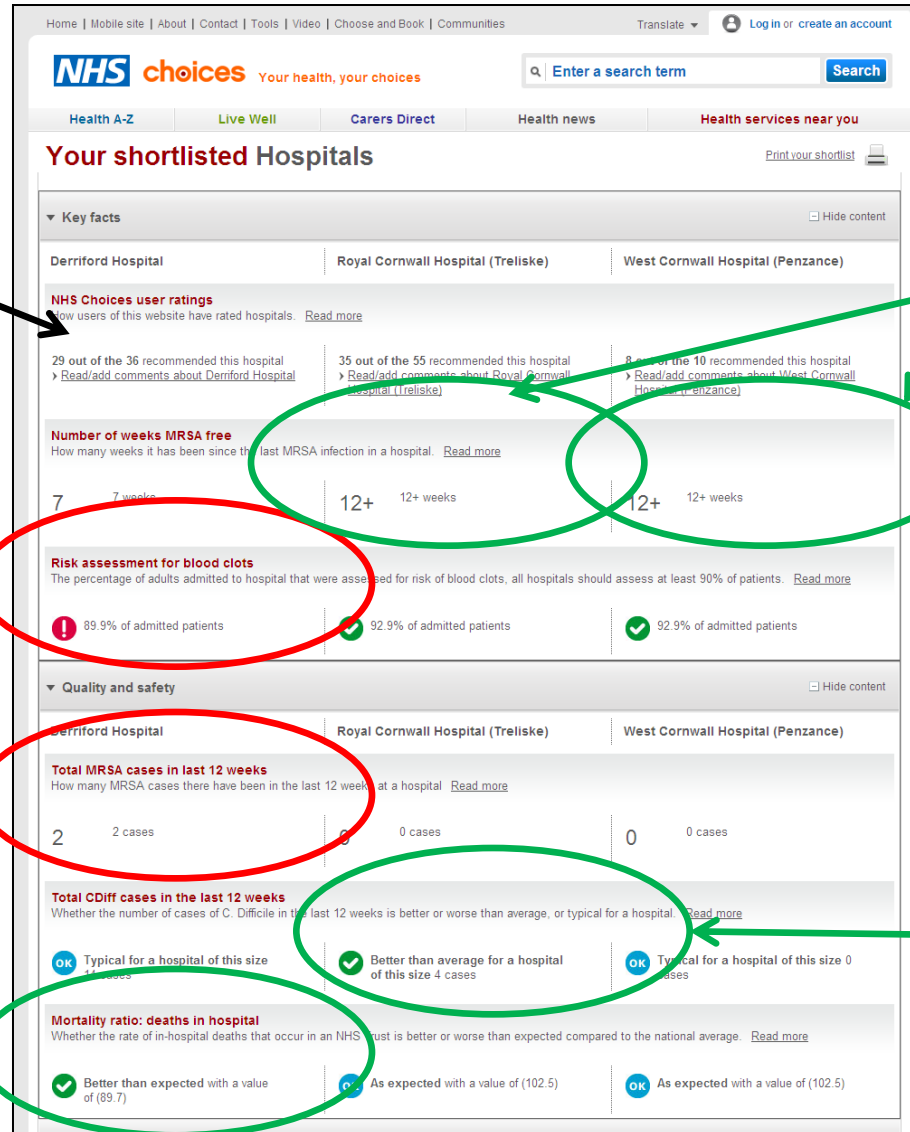
Put pressure on local managers to improve

Patient ratings

Blood clots

2 recent MRSA

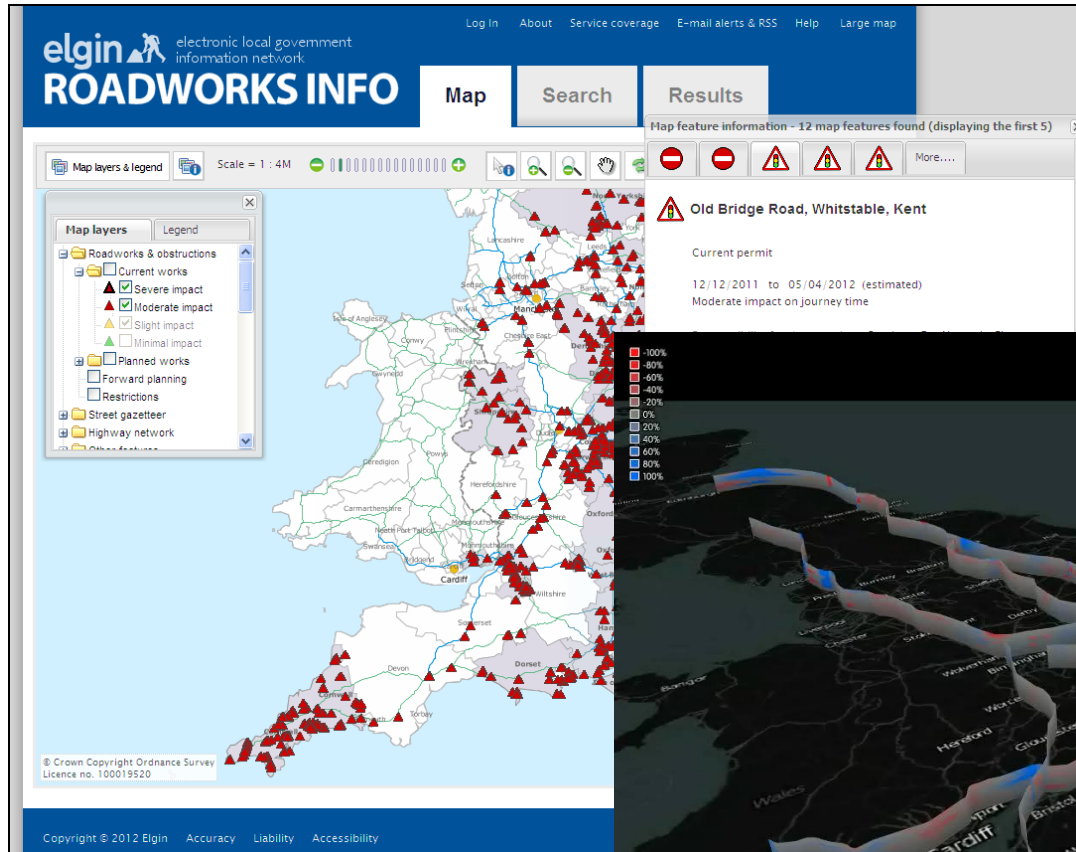
Low Mortality



12+ Weeks MRSA-free

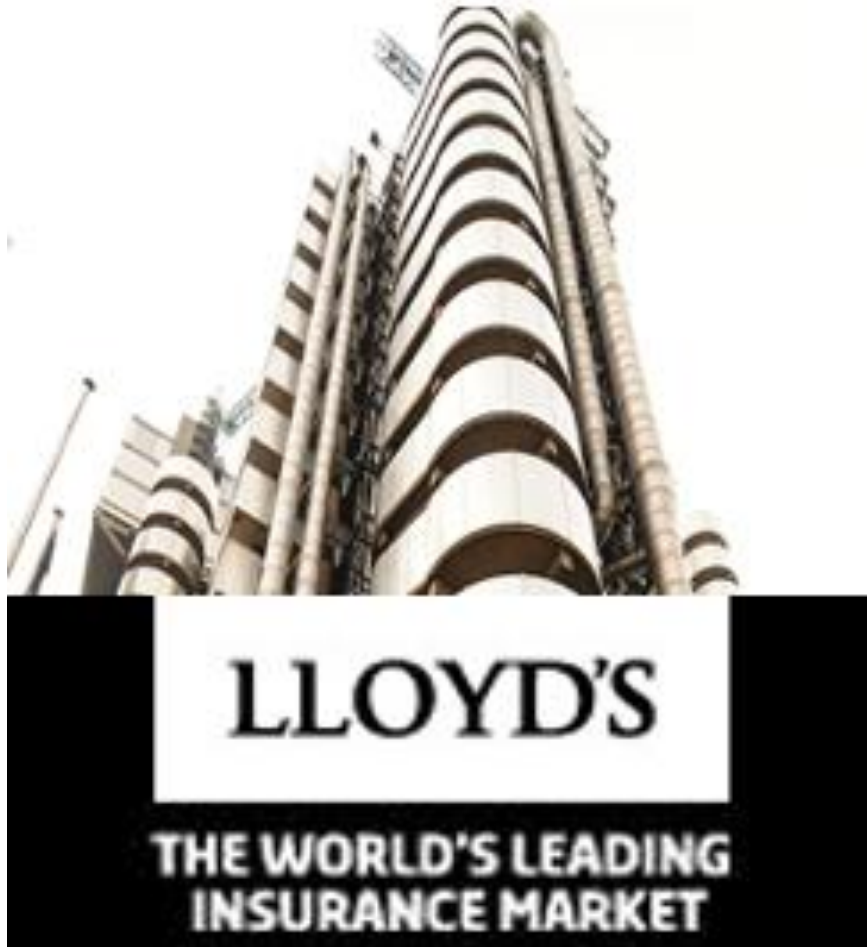
Good C-Diff record

Business efficiency/optimisation



Real time info on road delays and roadworks allows logistics efficiency

Financial Products



- Weather Risk Management (US: \$4bn annual contracts value)
- Flood insurance on detailed topography and river records

Economic Value of Open Data

- Open Gov Data in EU would increase business activity by up to €40 Bn/year
- Direct & indirect benefits up to €200 Bn/year (1.7% of EU GDP)
- Open Weather Data in US has created 400 companies employing 4000 people
- Spanish study found ~€600m of business from open data with >5000 jobs
- Australian study found ROI of ~500% from open data

It's not (just) an IT project!

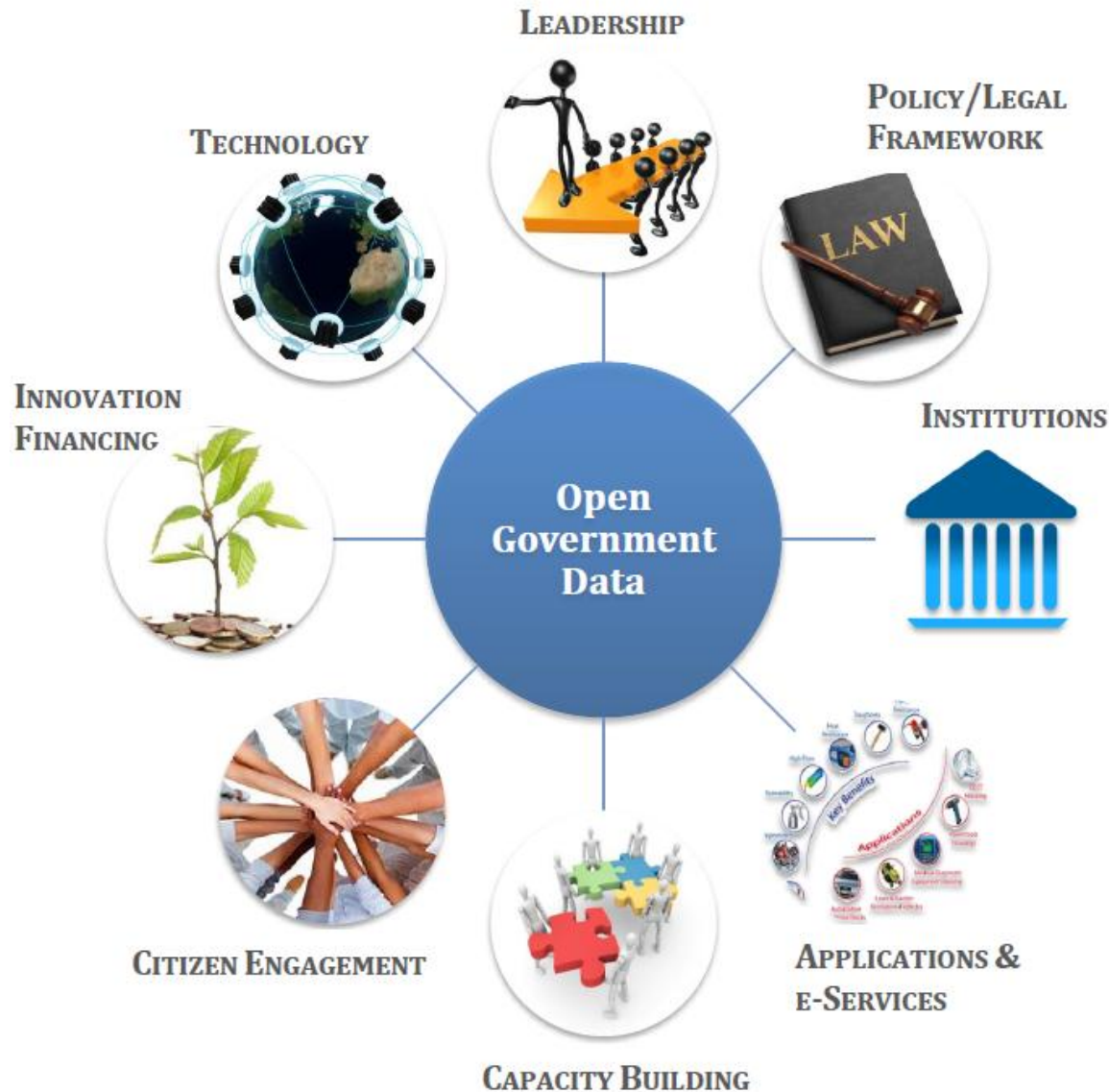
CIOs can give leadership, but

- CIOs/IT Directors often do not “own” the data
- Key issues are business, policy and politics

Keep the IT simple

- Good choice of established open source (eg CKAN, Drupal) or commercial products (eg Socrata)
- Start with simple solution, add functionality if/when needed

WB Value Proposition OGD Ecosystem



What we have done so far

Open Government Partnership

Kenya has stated its intention to participate in the global Open Government Partnership, a global movement of Countries that seek to empower their citizens to be involved in active governance, engaging Kenyans in the development of their Communities.

Open Government Partnership

Latest Datasets and Views

- Poverty Rate, by District
- County Expenditures by Administration 2002-3 to 2008-9
- Kenya Primary Schools, 2007
- Health Facilities
- County Urbanization-2009

Budget 2010 to 2011 recurrent plus development

Chart shows total expenditure by administrative vote. Size of box shows how large the vote is in the budget. Color shows changes from last year.

Game Parks Visited in 2009

Kenya National Bureau of Statistics, Statistical Abstract 1996 - 2009 Visitors to Parks and Game Reserves By Park and Year (Numbers)

Quarterly GDP 2000 - 2011 Chart

KNBS: Quarterly Gross Domestic Product by Economic Sector, 2000 - 2011, KSh Million at Constant 2001 prices

Counties

Information on the 47 Counties can be found here. Easily find data sets relating to a specific County.

Developer? Click here!

Find out about our powerful developer APIs and tools.

KODI data and usage are gradually expanding...

- ▶ **200+ datasets at launch (July 8, 2011)**
- ▶ **340+ datasets as of Nov 2011**
- ▶ **400+ datasets as of Jan 2012**
- ▶ **146,690+ page views**
- ▶ **3,500+ dataset downloaded and embedded to various websites and blogs**

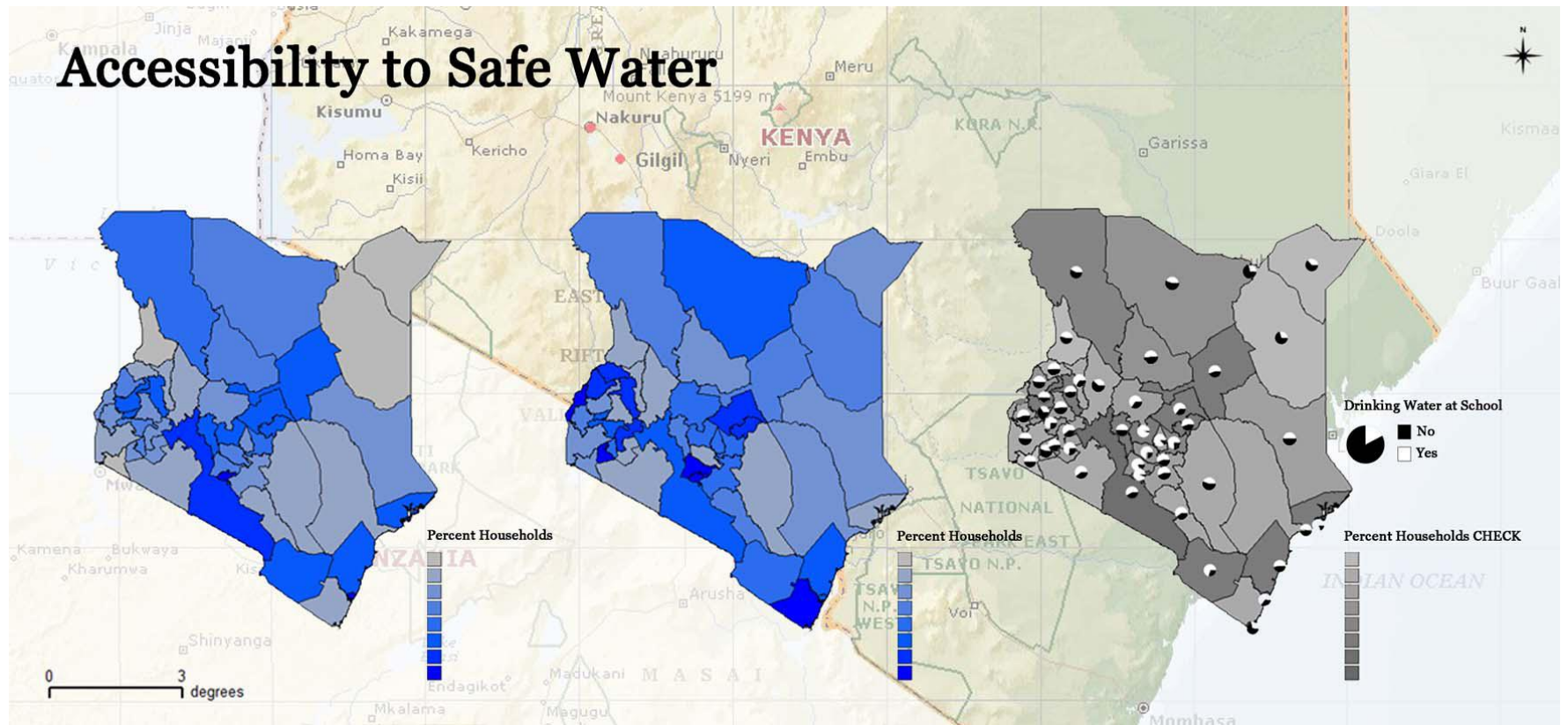
But converting data....



Health Facilities

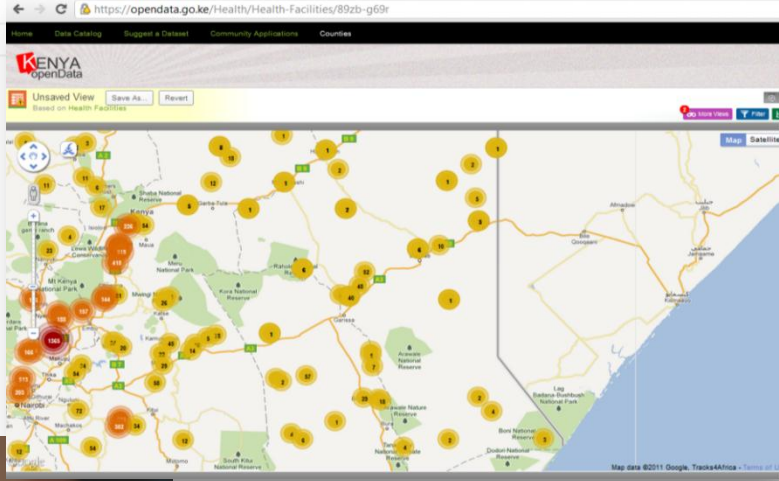
Facility Number	F_NAME	HMIS	Province	District	Division
1	1 ANMER DISP		190 CENTRAL	KIAMBU	KIAMBAA
2	2 BATHI DISP		192 CENTRAL	KIAMBU	LARI
3	3 BIBIRIONI DISP		3,731 CENTRAL	KIAMBU	LIMURU
4	4 CHURA DISP		CENTRAL	KIAMBU	KIKUYU
5	5 CIANDA DISP		193 CENTRAL	KIAMBU	KIAMBAA
6	6 GACHOIRE DISP		CENTRAL	KIAMBU	LARI
7	7 GATHANGA DISP		931 CENTRAL	KIAMBU	KIAMBAA
8	8 GATHANGARI DISP		CENTRAL	KIAMBU	GITHUNGURI
9	9 GIATHIEKO DISP		CENTRAL	KIAMBU	GITHUNGURI
10	10 GICHARANI DISP		3,638 CENTRAL	KIAMBU	KIKUYU
11	11 GICHURU DISP		198 CENTRAL	KIAMBU	LIMURU
12	12 GITHIGA HEALTH CENTRE		2,401 CENTRAL	KIAMBU	GITHUNGURI
13	13 GITHUNGURI HEALTH CENTRE		233 CENTRAL	KIAMBU	GITHUNGURI
14	14 GITIHA HEALTH CENTRE		2,398 CENTRAL	KIAMBU	GITHUNGURI
15	15 HOLY CROSS (THIGIO) DISP		612 CENTRAL	KIAMBU	LIMURU
16	16 KAARIA DISP		CENTRAL	KIAMBU	KIAMBAA
17	17 KAGAA HEALTH CENTRE		2,400 CENTRAL	KIAMBU	GITHUNGURI
18	18 KAGWE CATHOLIC MISSION DIS		207 CENTRAL	KIAMBU	LARI
19	19 KAGWE HEALTH CENTRE		2,447 CENTRAL	KIAMBU	LARI
20	20 KAMAE FOREST DISP		208 CENTRAL	KIAMBU	LARI
21	21 KAMBUI DISP		209 CENTRAL	KIAMBU	GITHUNGURI
22	22 KAMBURU DISP		4,831 CENTRAL	KIAMBU	LARI
23	23 KARAI HEALTH CENTRE		CENTRAL	KIAMBU	KIKUYU
24	24 KARIA DISP		210 CENTRAL	KIAMBU	KIAMBAA
25	25 KARURA SDA DISP		CENTRAL	KIAMBU	KIAMBAA
26	26 KARURI HEALTH CENTRE		261 CENTRAL	KIAMBU	KIAMBAA
27	27 KENTMERE DISP		2,413 CENTRAL	KIAMBU	LIMURU

...into user-friendly formats...





Bringing data back to schools, communities



...that reach citizens...

Requires a lot of “connecting the dots”



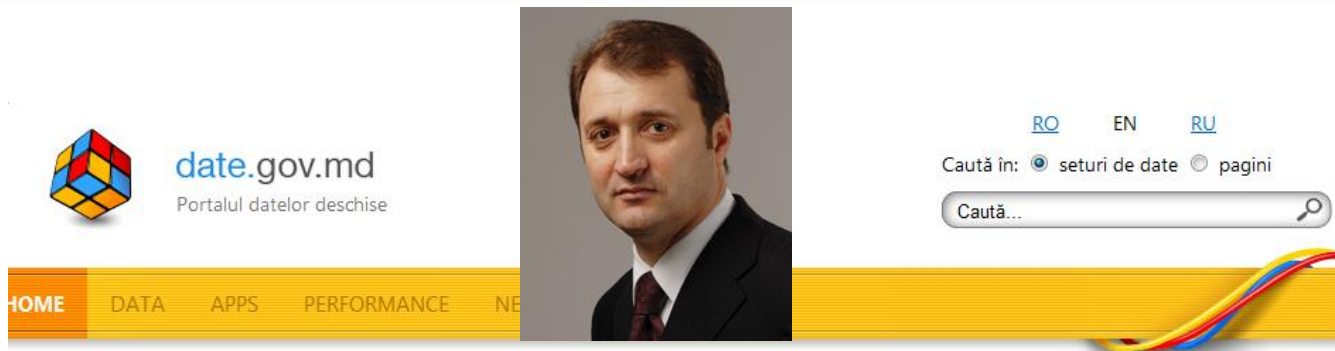
World Bank assistance

- ▶ **Kenya Transparency & Communications Infrastructure project (\$6.5m of \$54m AF)**
- ▶ **Innovation Grant – Open Data Incubator (\$100k)**
- ▶ **EFO (DfID) for Education data integration & outreach**
- ▶ **Governance Partnership Facility**
- ▶ **World Bank (WBI, TWICT) TA for open data, support for Hackathons, Open Data Media Workshops, etc**

Some initial lessons

- ▶ **Transparency is not enough – engaging the demand-side is critical to success of open data**
 - ▶ Many users will not spontaneously ‘take up’ open data
- ▶ **There is no formula for successful outreach**
- ▶ **But a key element is bringing together data suppliers and users on sustained basis to define problems and iterate solutions**
 - ▶ Development professionals and ICT developers
 - ▶ Infomediaries including traditional media
 - ▶ Research and higher education communities
 - ▶ Embedding open data in ongoing innovation hubs and events, incl. hackathons
- ▶ **For WB support, a cross-sectoral approach is vital:**
 - ▶ Data – PREM, HD
 - ▶ Open data global expertise – WBI, TWICT, DEC
 - ▶ Citizen apps, social accountability – SD, WBI, TWICT

Top Leadership is Key



Fondul Național de date geospațiale al Republicii Moldova

Do you want an open and transparent government?

Welcome to the open data governmental portal. Here you can search, download and reuse open government data to enhance transparency, performance and responsiveness of public institutions. Open data is the data provided by public authorities in the machine readable format, at the disaggregated level. However, they do not contain personal information, trade secrets and state secrets.

Identification and publication of data sets of interest to citizens and businesses is one of the duties of public authorities. This practice will increase transparency of the public sector performance and responsiveness. Date.gov.md encourages active participation of citizens. You and all the citizens can promote and benefit from open data.

Currently, there are **163** datasets published on the portal. Take a look at the data!



RECOMANDAREA ZILEI

Cheltuielile bugetului de stat: pla...

SETURI DE DATE NOI

- Informația cu privire la...
- Date privind prestatia me...
- Planul de valorificare a...
- Cadastrul funciar al Repu...
- Registrul de Stat al Orga...



TOP MINISTERE

TOP SĂPTĂMÎNĂ

TAGURI POPULARE

Open Government Data Portal

www.date.gov.md

The screenshot shows the homepage of the Open Government Data Portal. At the top left is the logo for date.gov.md, labeled 'Portalul datelor deschise'. To the right are language options for RO, EN, and RU, and a search bar with the text 'Caută în: seturi de date pagini' and a search button. Below the search bar is a navigation menu with links for HOME, DATA, APPS, PERFORMANCE, NEWS, and GET INVOLVED. A large banner for the 'Biroul Național de Statistică al Republicii Moldova' is visible. On the right side, there are sections for 'RECOMANDAREA ZILEI' (Today's Recommendation) and 'SETURI DE DATE NOI' (New Data Sets), each with a list of links to specific datasets. Below these are three sections: 'TOP MINISTERE' (Top Ministries), 'TOP SĂPTĂMÎNĂ' (Top Weekly), and 'TOP POPULARITARE' (Top Popular), each listing the most popular datasets from various government departments. At the bottom, there are logos for 'PROIECTUL BOOST' (The Boost Project) and 'AppS for Development', with the text 'A competition brought to you by THE WORLD BANK'.

Launched on: **April 15, 2011**

Number of datasets: **430**

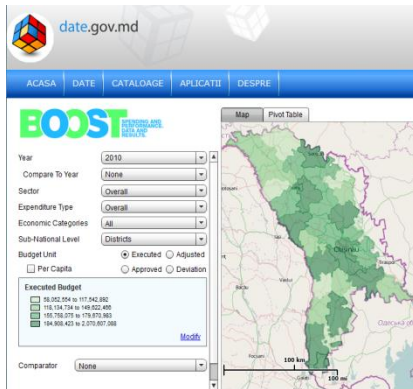
Publishing institutions: **30**

Number of unique visitors: ~
3000/month

Number of downloads: ~
5000/month

Moldova Open Data Case Study in collaboration with the World Bank

Applications that use open data

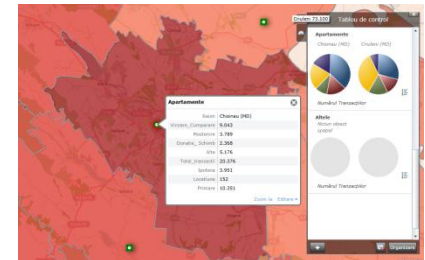


BOOST - Open Public Expenditure Database

Launched on: **December 14, 2011**

Based on Ministry's of Finance public expenditure data
Valuable tool for analyzing public financial data

www.moldova.wb-boost.org



Real estate
registrations
by regions



Alerts. Open data
+ crowdsourcing



Public
expenditure
on schools



Government forms all
in one click

Engaging citizens in promoting innovation

Public consultations platform

www.particip.gov.md



The screenshot displays the Particip.gov.md website interface. At the top, there is a search bar and navigation links. The main content area features a poll titled "Deșeurile în Moldova se gestionează eficient?" with a progress bar showing 5% for "Da" and 95% for "Nu", based on 296 total votes. Below the poll, there is a "Modul de participare" section with tabs for "Proiecte", "Agenda", "Căutare", "Statistica", and "Modul". A list of projects is shown, including "Proiectul Legii fondurilor asigurării obligatorii de asistență medicală pe anul 2013 (modificat)" and "Proiectului hotărârii Guvernului cu privire la modificarea și completarea Hotărârii Guvernului nr.381 din 13.04.2006". On the right side, there is a "Noutăți" section with a news item titled "Mesaj pentru participanții la consultările publice privind politicile Diasporei" dated 10.08.2012, accompanied by a photo of a meeting.

215 draft policy proposals published

20 out of 26 central government agencies are using the online platform

Engaging citizens in promoting innovation

Open Innovation Week May 2012

- Data Journalism Booth camp
- BOOST training
- Open Government Day
- TechCamp
- Hackathon



SocialTools Data Gov.MD - Finanțe, Worldbank.org

OpenData SocialTools Moldova

Make open government data social. In a matter of minutes you could include live data on your blog, website or Facebook page. To get started, just select the data source from the menu above and choose a service you would like to publish.

[Learn more >](#)

Latest date.gov.md documents

- Fișierul de clasificare școlilor secundare și instituții de învățământ secundar (2009-2010)
- Distribuția cadrelor didactice pe clase de predare (2009-2010)
- Cadrele didactice după gradul științific (2009-2010)
- Date privind încheierea în muncă a cadrelor didactice (2009-2010)
- Distribuția cadrelor didactice după nivelul de studii (2009-2010)
- Date privind personalul managerial în instituțiile de învățământ secundar (2009-2010)
- Alegerea instituțiilor de învățământ secundar cu cadre didactice (2009-2010)
- Absențarea școlilor (2009-2010)
- Activitatea extracurriculară (2009-2010)
- Activitatea școlilor pe săptămână (2009-2010)

[Feedback to Facebook >](#) [Get widget >](#)

World Bank widget of the day: **Top expenditures** [Get the code >](#)

World Bank Finances

Disbursed Amount USD | Undisbursed Amount USD

© SocialTools Team 2012

Open MED

Instituții medicale Medici Specializări Rating

240x80

POLICLINICA N12 (Centrul medicilor de familie nr.12)

NO PHOTO

Descriere
Asistența medicală primară

240x80

Recomanda 96%

Poziția pe harta

MIRON COSTIN

240x80

Evaluarea specialiștilor

← Cardiology Equigrat Neurochirurg →

Jana Elena
Doctor
Evaluare: Frecvența, Plasa
100.00%

Corina Valentin
Doctor
Evaluare: Frecvența, Plasa
97.50%

Concurs de inovații
Aplicații inovatoare pentru o bună guvernare

Acasă | [Aplică la concurs](#) | [Centră pentru dosare](#) | [Eligibilitate](#) | [Categori](#) | [Criterii de selectare](#) | [Exemple](#) | [Junii](#) | [Contactați-ne](#) | [Despre noi](#)

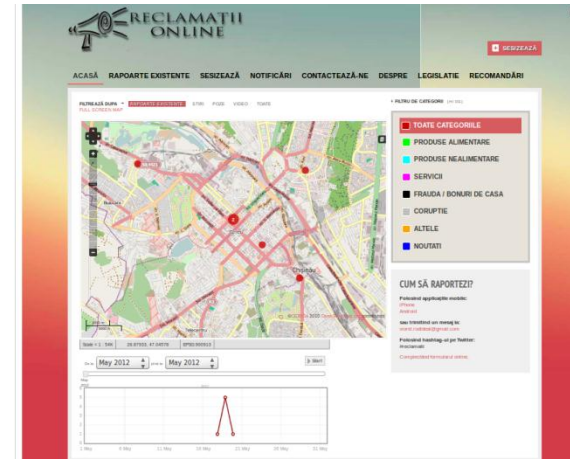


Aplicații inovatoare pentru o bună guvernare

Ați inovat organizația D-voastră cu ajutorul tehnologiilor informaționale? Participați în concursul inovațiilor în guvernare! Data limită se extinde până în 31 octombrie. Pentru a participa la acest concurs, completați formularul cu o scurtă descriere despre cum inovațiile tehnologice au contribuit la creșterea transparenței în sectorul public, eficientizarea proceselor de lucru sau îmbunătățirea serviciilor publice. Concursul „Inovații în guvernare 2012” este organizat de Centrul de Governare Electronică în parteneriat cu Fundația Soros-Moldova, Programul Național Unită pentru Dezvoltare, Banca Mondială, Asociația Companiilor TIC, Fundația Est-Europeană.

[REGULAMENTUL](#)

Apps for Moldova



Catalog.md

calitate Statut Instructie Clasă Familie Elev în clasă Obiect Profesor <-> Obiect
 blect -> Profesor Note Usuri Logs Logout

Lista tipurilor instituțiilor

id_statut	denumire_statut	Actions
1	Gimnaziu	Șterge Editează
2	Liceu	Șterge Editează
4	Scoala Medie	Șterge Editează
3	Scoala Primara	Șterge Editează
	+ denumire_statut	Adaugă



Open Data in Moldova – Case Study, July 2012



E-Government Center together with the World Bank elaborated the study that outlines the major events that led to opening government data. The study offers a set of recommendations.

<http://www.scribd.com/doc/99595560/The-Journey-of-Open-Government-and-Open-Data-Moldova>

The WB's data.worldbank.org/open-government-data-toolkit



THE WORLD BANK
Working for a World Free of Poverty

English Español Français Русский عربي 中文 ▶

GO

ABOUT DATA RESEARCH LEARNING NEWS PROJECTS & OPERATIONS PUBLICATIONS COUNTRIES TOPICS

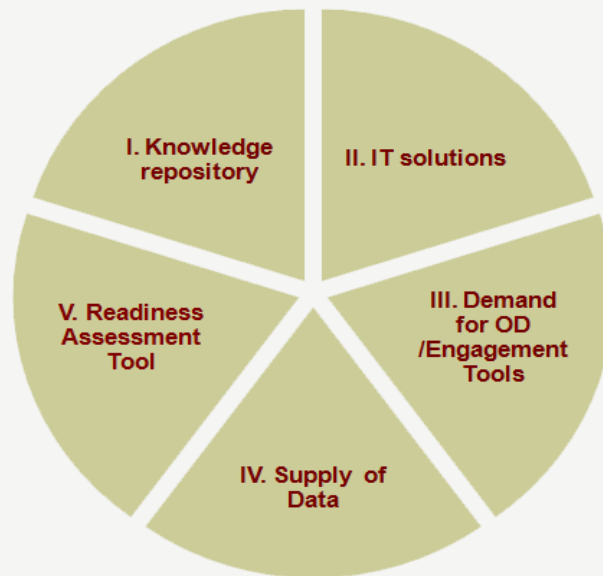
Data

By Country By Topic Indicators Data Catalog Microdata Blog News About For Developers Products

This page in English

Open Government Data Toolkit

SHARE



Open Government Data Toolkit

- ▶ What is Open Data? How is it used? Can you give examples?
- ▶ What are the computer requirements for Open Data?
- ▶ What data should we put on an Open Data site?
- ▶ How can we make sure that the data we are publishing is of good quality?
- ▶ How do we start? Who can help?

Provide feedback at data@worldbank.org

Print