

21th CENTURY – GLOBAL INTEGRATION



Taipei's Experience

Chang Chia-sheng

Department of Information Technology

Taipei City Government , Taiwan

November 5, 2007

Worldwide Assessment

- On June 9, 2006, Taipei City **won the Intelligent Community Awards 2006** given by the Intelligent Community Forum (ICF).
- On June 29, 2006, JiWire, the public Wi-Fi company, announced that **Taipei City has the world's largest public Wi-Fi network.**
- On December 6, 2006, W2i (Wireless Internet Institute) selected Taipei as **the winner of the e-Government Applications of W2i Wireless Communities Best Practices Awards.**



Current and Future Strategies

e-Government

Enhance government efficiency to offer quality municipal services

e-Communities

Encourage residents participation for the development of a more vital city and friendlier communities

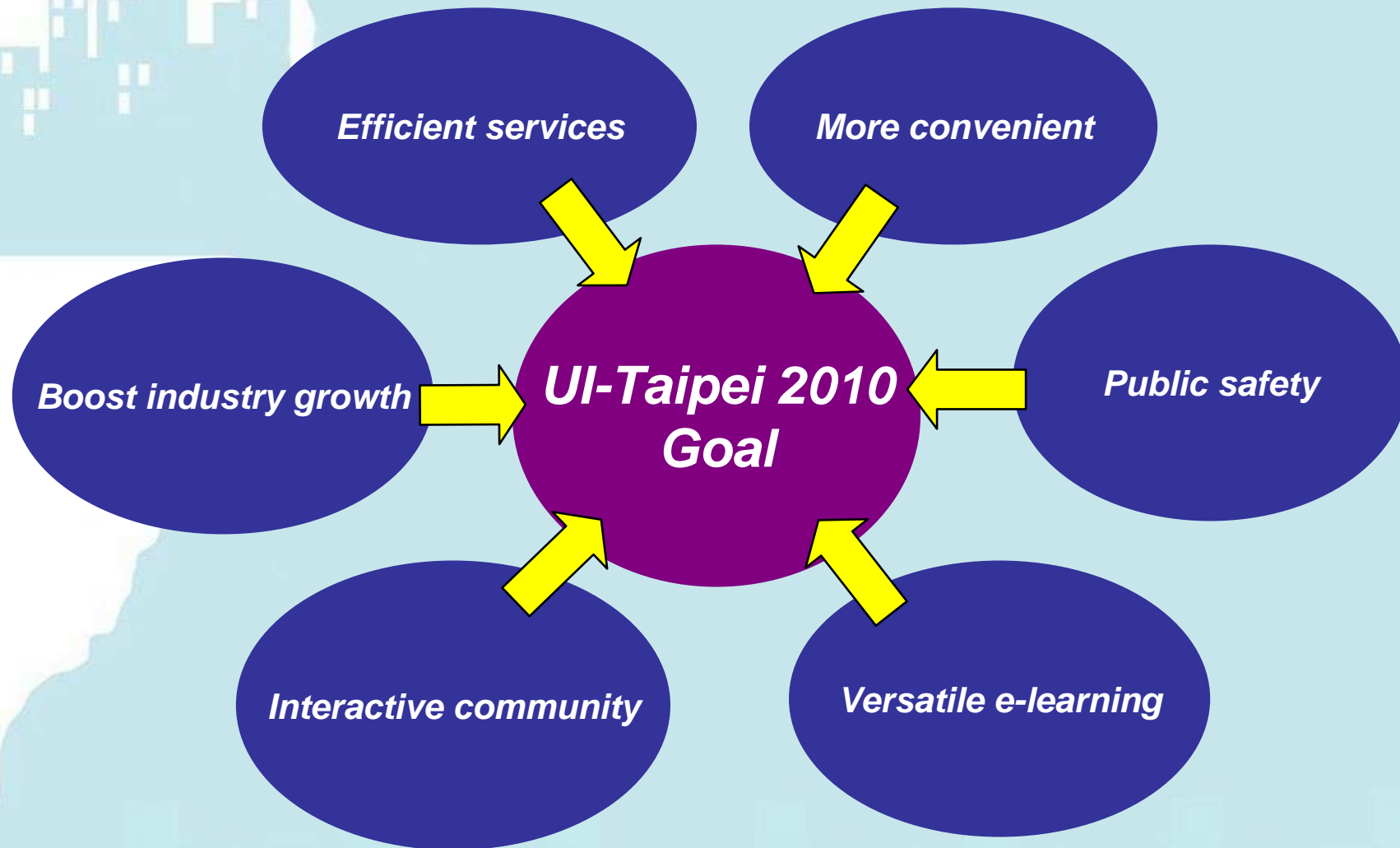
UI -Taipei
2010

e-Living

Improve lifestyle and environment to make the city more competitive

➤ **Planning for an Ubiquitous Intelligent Taipei in 2010**

6 Goals of UI-Taipei 2010



One-stop Service

One-Stop Service via different channels

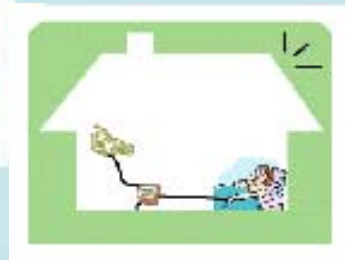
1999
Citizen Call Center

Single service counter
at district offices

Household
Messenger Service

Integrated portal

Intelligent Health-Care Home Services



Intelligent Homes



City Hospitals



Social Welfare Agencies



Family members



Health-care Database

