

From Ships to Chips

—

Transforming Public Services to the e-Community

in
City of Malmö, Sweden

Claes-Olof Olsson

claesolof.olsson@malmö.se

CIO, City Office

City of Malmö



The Ships in Malmö

A few historical dates

- 1870 Kockums is established in Västra Hamnen**
- 1915 Malmö exceeds 100,000 inhabitants**
- 1952 Malmö exceeds 200,000 inhabitants**
- 1970 The Shipyard at its peak, w/ 6.000 empl's**
- 1986 Shipyard closes, replaced by auto mfg**
- 1991 Auto mfg closes**



Global Forum in Malmö - november 2004

The Challenge

**Transforming the
community, marked by a
century of the
Industrial revolution,
into a
decade of IT and
knowledge based
industry**

Claes-Olof Olsson

3



A three-fold Challenge

- **The Physical Infrastructure**
 - the fixed link to Denmark *plus* road & railroad systems
 - two expanding international airports
 - new property development -
incl revamping the old shipyard area
- **The Human Capital / Infrastructure**
 - Malmö University
 - From welders and other mech'l shop workers
to IT, Bio and other sciences
- **The IT Infrastructure**
 - A new fibre based broadband network, built & owned by the City
(*plus* the fixed link to Denmark)
 - A structured approach towards e-Government (i. e. e-Business)

Global Forum in Malmö - november 2004

Claes-Olof Olsson

4



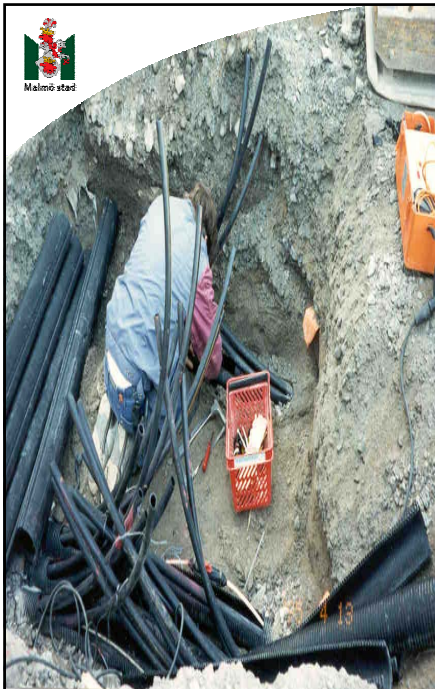
Global Forum in Malmö - november 2004

The Telecom / Broadband History

- 1993 - De-regulation of the Swedish Telecom market
- 1994 - Many Cities start building their own networks
- 1999 - Gov't proposal; Broadband for national growth
- '99 - '00 Several gov't investigations on how to promote rapid roll-out of BB
- 2000 - City of Malmö initiative (*without* Gov't grants) to extend council network to publicly accessible IT infrastructure

Claes-Olof Olsson

5



Global Forum in Malmö - november 2004

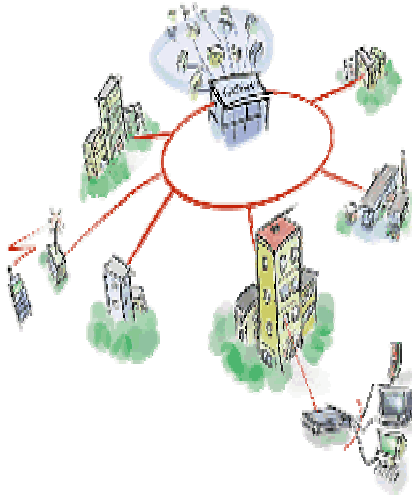
The Broadband Paradox - 1

- In areas of great market potential (densly populated, high purchasing power)
 - =>
 - obvious risk of vertical monopolies, i e low/no competition
 - =>
 - need for gov't control (*or* - DIY)
- In other areas => no market interest (*only* alternative; DIY...)

Claes-Olof Olsson

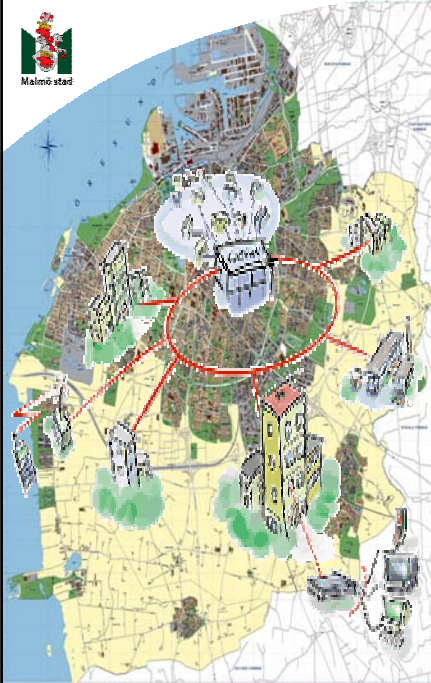
6

Why a publicly owned IT infrastructure ?



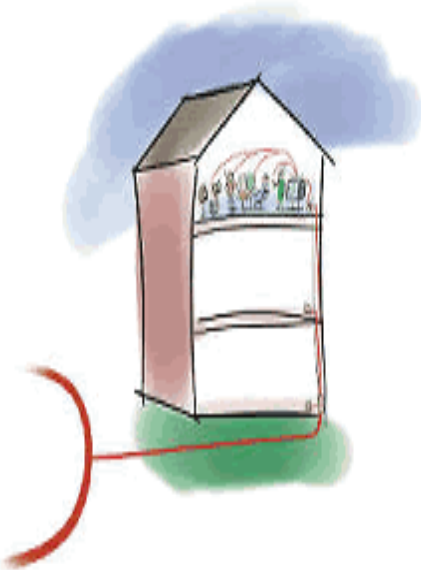
- An open, neutral market place (streets, utilities, etc)
- An open alternative creates competition => lower prices
- More market actors can gain access to more customers
- Promotes establishment of small & medium-sized companies
- Promotes the city and the region as an interesting place to work and live

The IT Infrastructure in Malmö



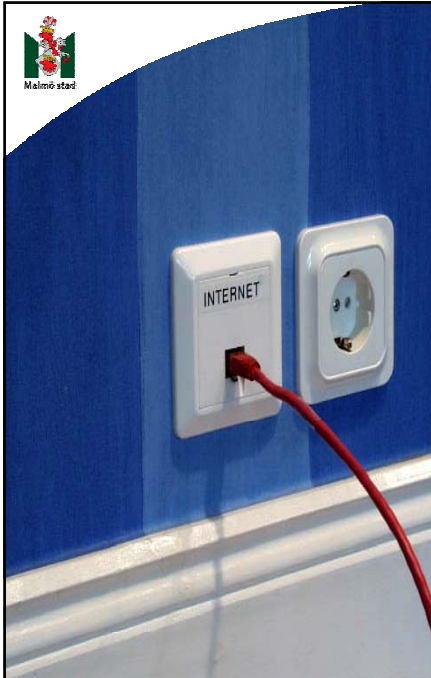
- The open, fiber based structure
 - 300 km
 - 300 access points
- The active internal network - for the City Council op's
 - 200 access points w/ fiber
 - 400 access points via leased DSL
- 24/7/365 operations, w/ 2 hr response time

A Connected City



- BB to all schools
 - 40' students w/ e-mail & High-speed Internet
- The two largest housing companies in Malmö have BB solutions to all apartments
 - 50' apartments
 - > 50% of the citizens have BB capability in their homes
 - Today; ~ 30% conn'd

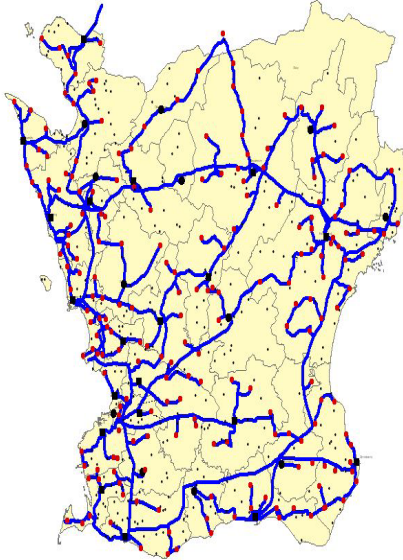
The Broadband Paradox - 2



- The highest number of BB wired homes in Europe (world?)
- We have "fat pipes"
BUT still fairly low up-take
- BB operators previously focused on building Infrastructure, still haven't come up new "Killer App's"



Malmö as the Regional Hub



- Integral part of the SkåNet structure
- The largest in-house IT op's of all 33 municipalities in Skåne
- GIX w/ all major telecom op's
- Several BB operators located in Malmö, many Telehousing Fac's
- The fixed link to Denmark
 - 384 fiber pairs
 - (50% of the Russian BB volume)

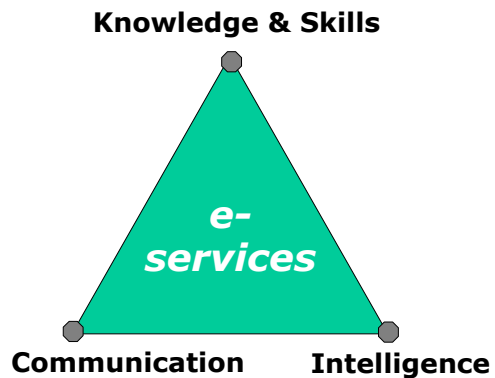
Global Forum in Malmö - november 2004

Claes-Olof Olsson

11



Malmö's e-Service Strategy



Global Forum in Malmö - november 2004

Claes-Olof Olsson

12

Conclusion

- **The City of Malmö is today in the midst of the most dynamic and challenging time period since the beginning of the last Century**
- **ICT development must always be measured from a user perspective, beneficial for the Customers/Citizens**
- **An open, flexible and dynamic Infrastructure is paramount in supporting efficiency and growth**