

### Beyond a Card Community - PKI based Multiple Application Smart Card Management System for Global Interoperability

Global Forum 2005@ Brussels

8<sup>th</sup> November, 2005

Eikazu NIWANO  
Service Integration Laboratories  
NTT Corporation

### Smart Card Management System (SCMS)?

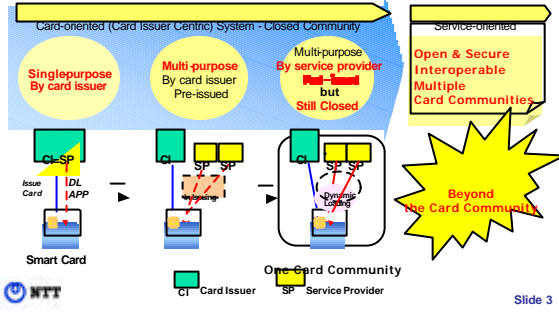
- Service and Locative Conversion via Smart Card – between public sectors and private sectors etc



Slide 2

### Existing Models and Issues to be Solved

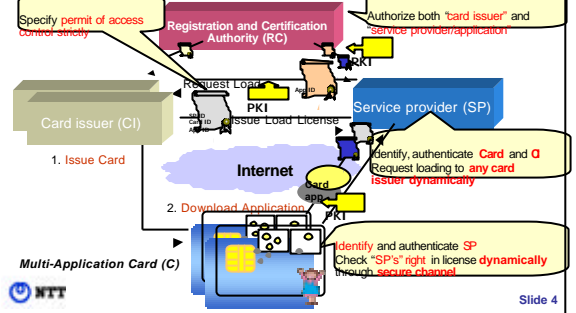
- Still Card Issuer-oriented and Closed One



Slide 3

### Innovation: To apply PKI-based Multi-Application Card Management

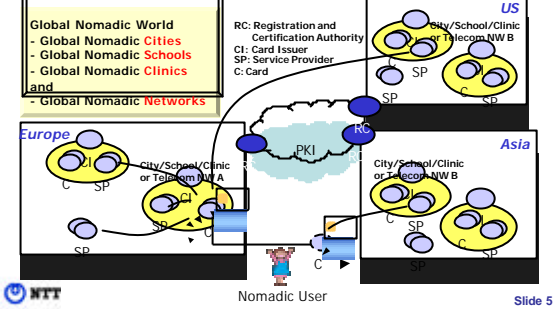
- Load Apps into any card issued by different card issuers.



Slide 4

### Global Interoperability - From Isolated Card Community to Federated Card Communities

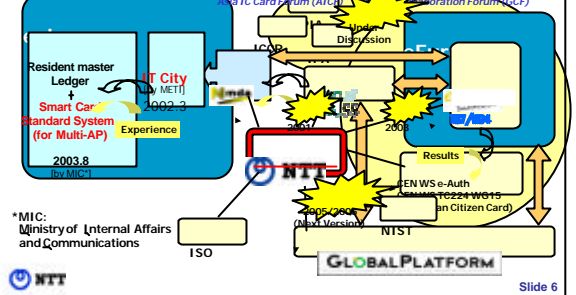
- Nomadic Use of Smart Card among Card Communities Globally



Slide 5

### Towards Global Convergence and Harmonization

- This framework is accepted and well-improved through global collaboration of many standardization organizations



Slide 6

## Conclusions and Future Works

- Multi-application smart card market, especially **Global eID** and **Global eID** with **multi-applications** are growing rapidly. But still hard to use it **beyond a card community**
- By applying PKI, federated card communities such as cities/schools/diverse including **services and business cooperation** can be constructed globally
- Global collaboration** among many standardization organizations in Japan/EU/US needs **needs/requirements clear** and **finally the framework** are going to be **accepted** with some improvement
- These international forums such as **BCF (JP/EU/US)** and **ADF (China/KR/Singapore/JP)** already started to discuss the framework as well as **global collaboration** among different regions is very important especially in cases that **regional issues** and **interoperability issues** is important
- More global collaboration in R&D is required in order to find **road maps and solution** for construction of PKI-based **SCMS, eID applications** (identity management) and other **"eID"** applications and **federated communities**



Slide 7

## Thank you

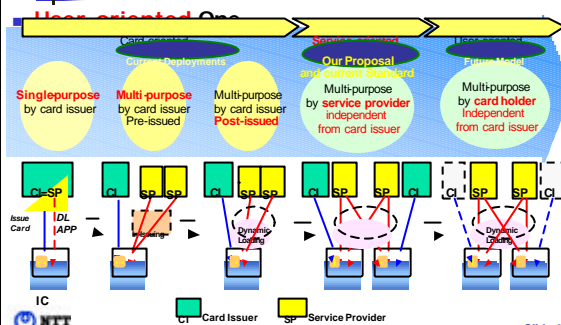
Contact: Eikazu NIWANO

Smart Card Platform Development Project  
Smart Card Service Promotion Projects  
Service Integration Laboratories  
NTT Corporation

3-9-11 Midori-Cho, Musashino-Shi,  
Tokyo 180-8585, JAPAN

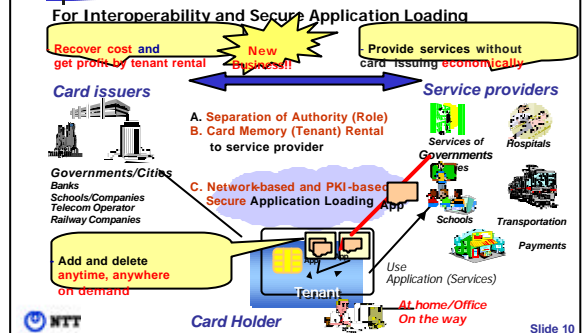
E-mail: [niwano.eikazu@lab.ntt.co.jp](mailto:niwano.eikazu@lab.ntt.co.jp)  
Telephone: +81 422 59 4914

## Towards User-oriented One



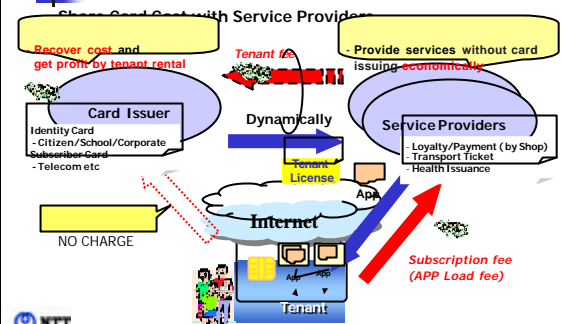
Slide 9

## PKI based Multiple Application Smart Card Management Framework



Slide 10

## New Business Model – Cost Sharing



Slide 11

## Towards Global Nomadic World

- What kind of community and card is suitable for this model?**
  - It might have many own facilities or related entities in the same community.
  - It should exist heterogeneously **everywhere** and **are able to be cooperated with each other** without difficulty - public/neutral entity -
  - It must be **used by nomadic (mobile) user** - traveler/mobile worker -
- So, the appropriate type of card might be**
  - Citizen card, school card and corporate card – eID Card**
  - Health insurance card**
  - Telecom SIM card** in Future Potentially beyond telecom operator
- Especially it may be reasonable to realize federated cities and schools for provision of universal services**
  - Global Nomadic Cities
  - Global Nomadic Schools
  - Global Nomadic Clinics



Slide 12

# Universal Services - Global Nomadic Cities/Schools/Clinics

- Citizens will use citizen card if visited city give him benefits such as **discounts/loyalty program**

