

Fakultät für Bauingenieurwesen
Faculty for Civil Engineering

Regulatory Challenges and Opportunities in a Digital World

Global Forum 2011 – Shaping the Future

Prof. Dr. Nico Grove

Assistent Professor
Institute for Infrastructure Economics & Management

Bauhaus-Universität Weimar
www.infrastructure-economics.com

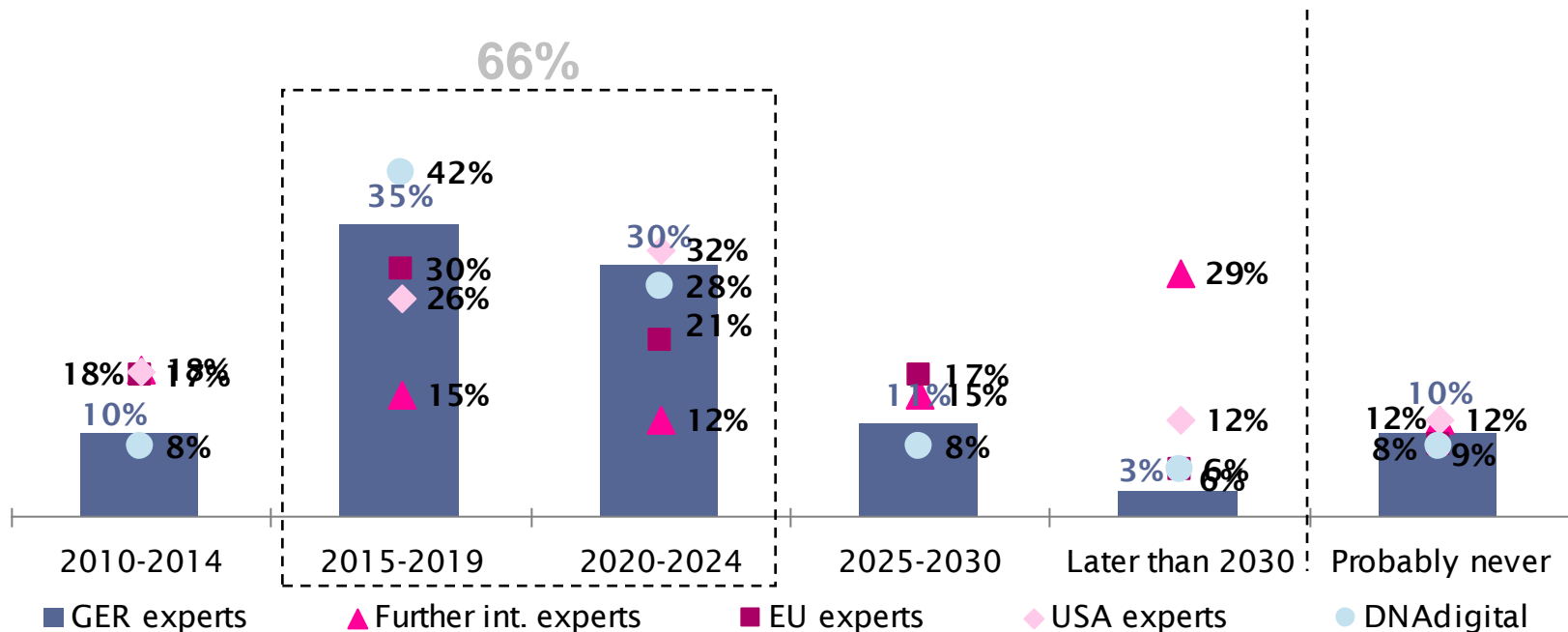
Brussels, 7th of November 2011



**Bauhaus-Universität
Weimar**

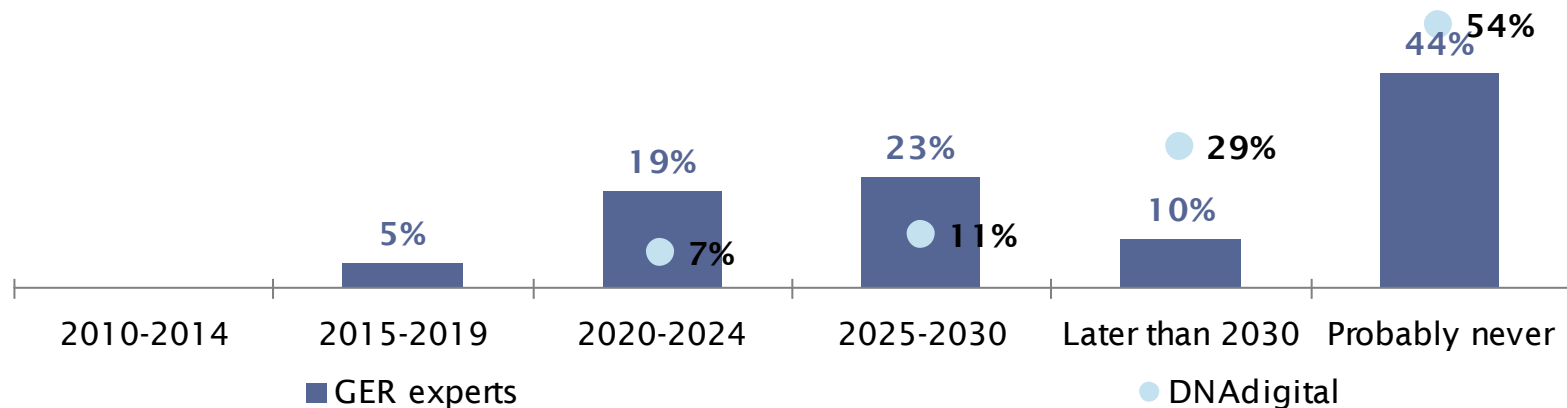
The Internet will reach almost the entire population within the next decade.

More than 95% of the adult population in <country> actively and regularly use the internet and its services.



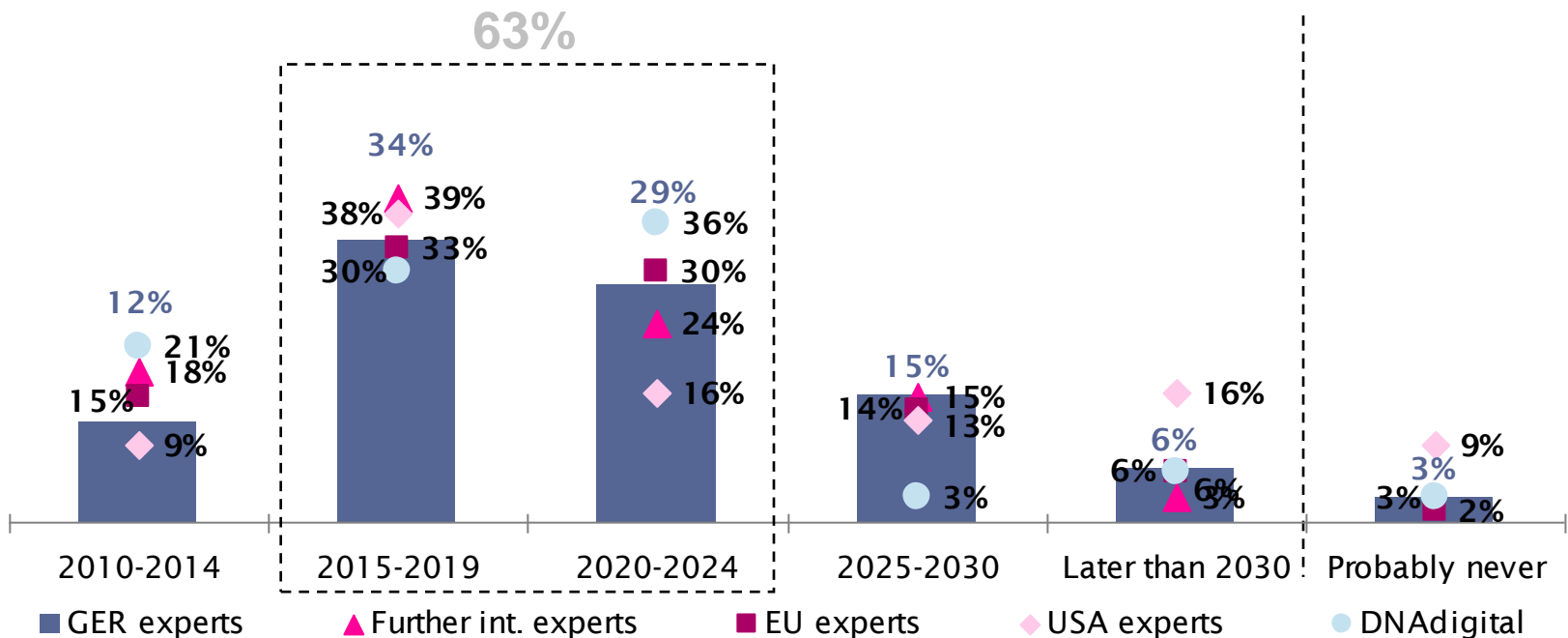
However, the Digital Divide stays persistent.

The digital divide of the population in <country> has virtually disappeared.



Nationwide mobile broadband access is available areawide within 10-20 years.

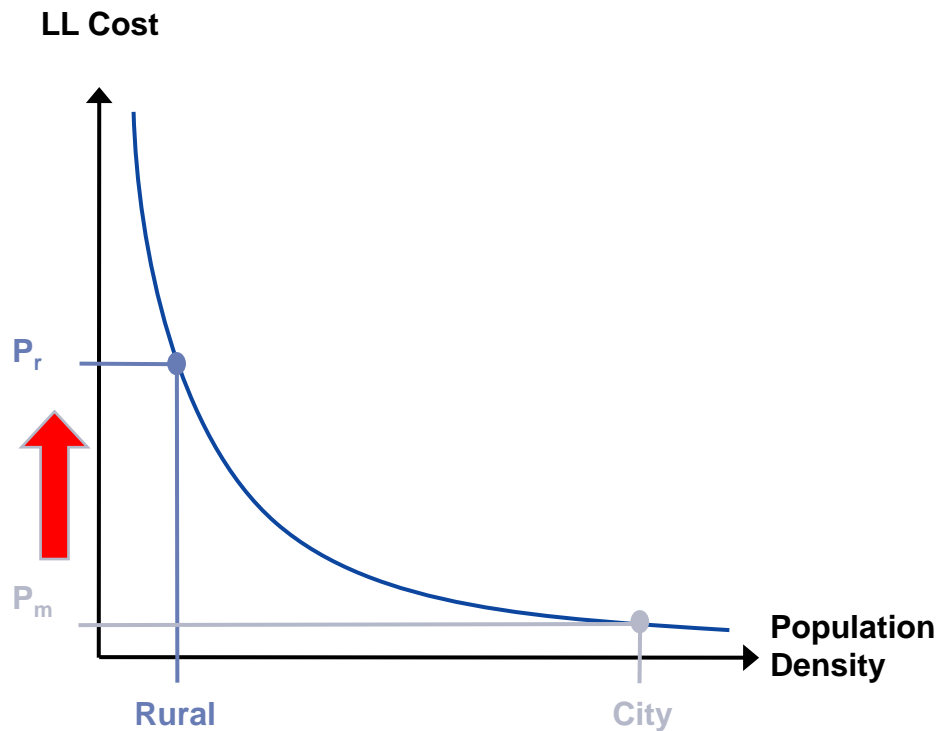
In <country>, 50 MB/s are available nationwide for mobile internet use (i.e., equally for uploads and downloads).



Rising cost per household are a major barrier to investments into rural areas.

Cost of LL Deployment

Local Loop Cost Structure

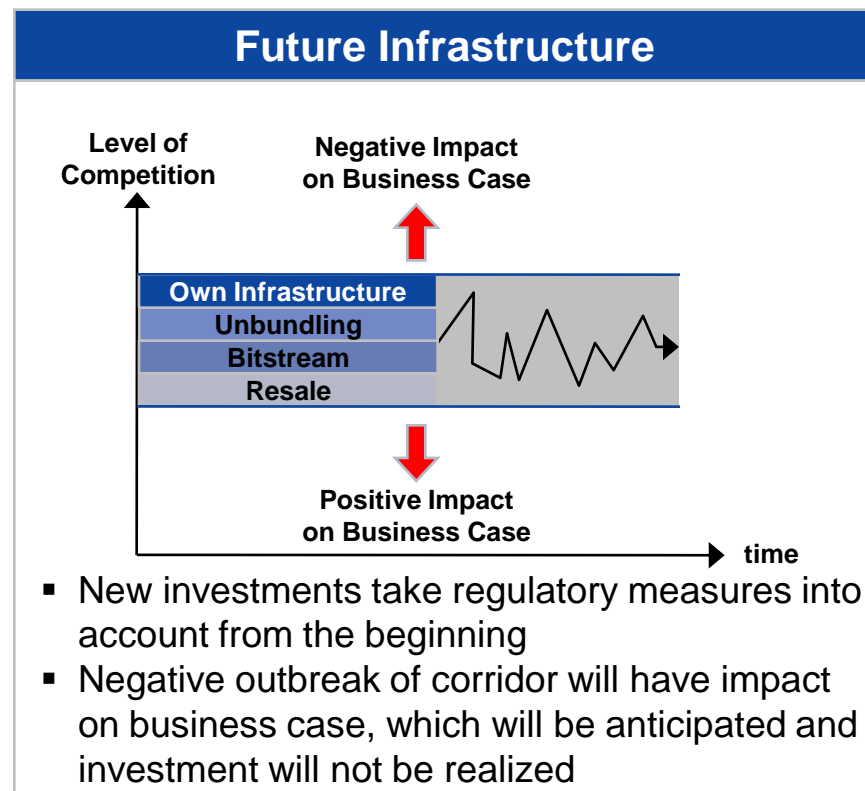
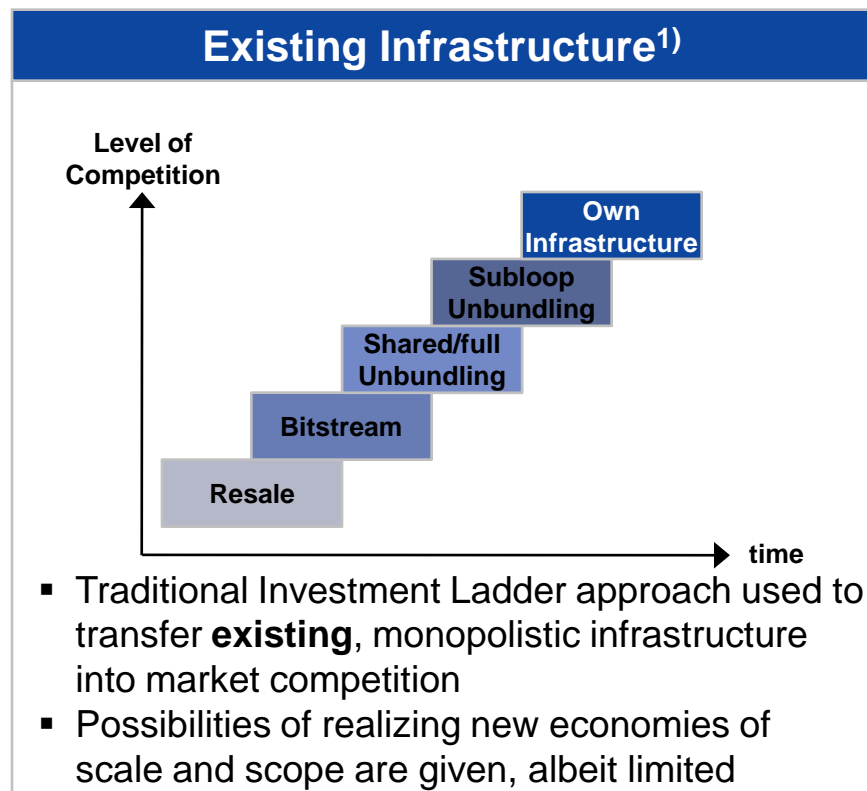


Further complexity:

- Average LL length increases with decreasing population density
- With higher LL length, cost for replacement increase exponentially

NGA with its new scale economies makes application of the Investment Ladder approach more difficult

Investment Ladder



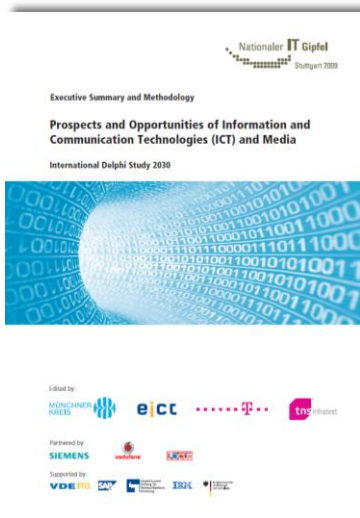
- Application of traditional Investment Ladder Approach will not work on infrastructure not deployed yet
- Setting long term regulatory conditions from the beginning will provide safe environment for investments

Challenge

How can we roll out entirely new infrastructures nationwide?

Thank You!

nico@grove.ch



The Müncher Kreis e.V. Delphi Study is available
free of charge via:

<http://www.muenchner-kreis.de>

