

A dark blue world map serves as the background. Overlaid on the map are numerous concentric white circles of varying sizes, centered on various geographical locations. Each circle has a small, solid-colored dot at its center. The dots are in shades of teal, orange, yellow, red, purple, and blue. The text "Collaborative Government & Collaborative e-Procurement" is centered over the map in a large, white, sans-serif font.

# Collaborative Government & Collaborative e-Procurement

**Dr. Sharon Nunes**  
**Vice President Smarter Cities, IBM**  
[snunes@us.ibm.com](mailto:snunes@us.ibm.com)  
**Global Forum, November 2010**

# The Reality of Global Integration



**ECONOMIC**



**SOCIAL**



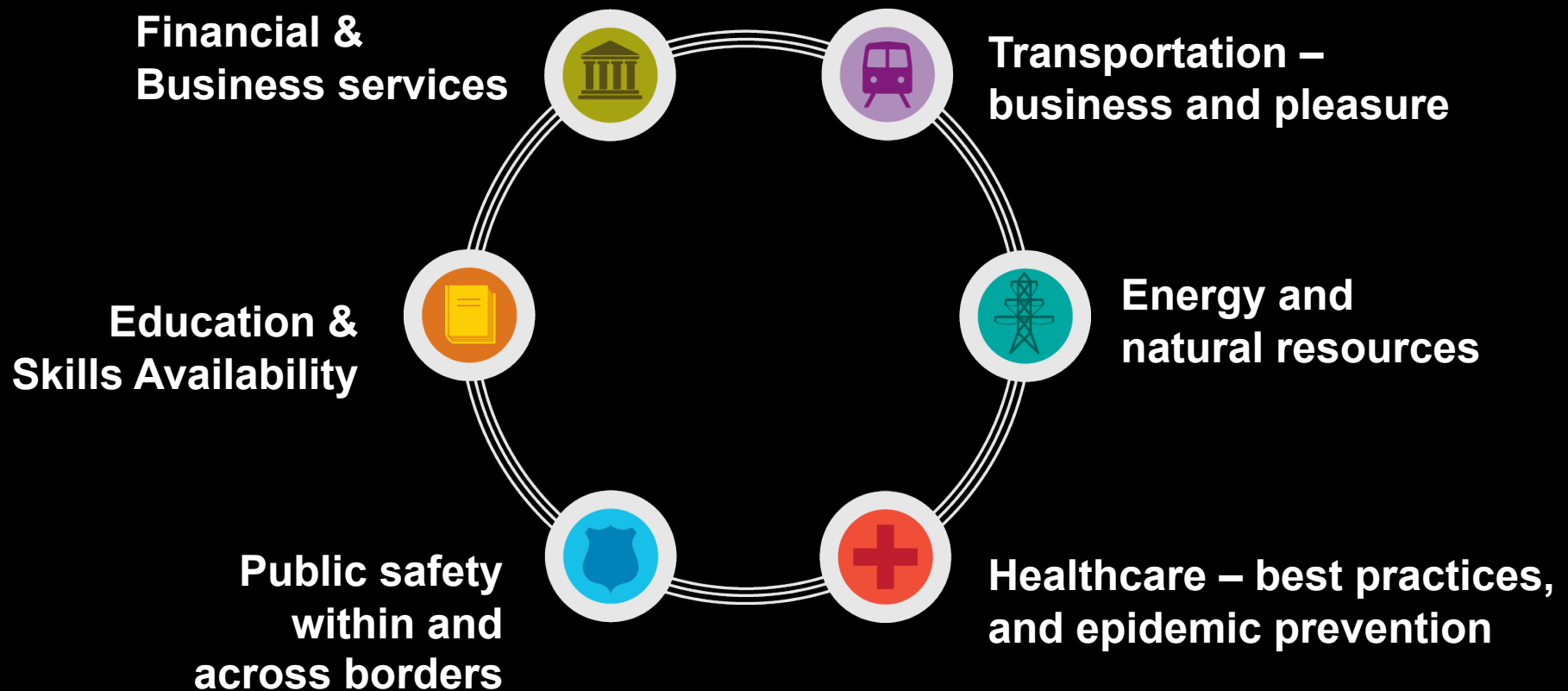
**TECHNICAL**



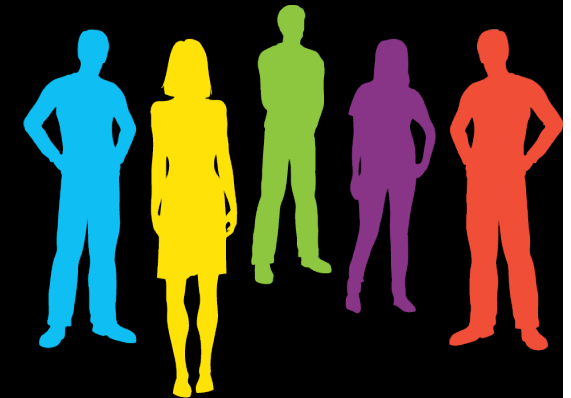
## A series of recent shocks – all with global impact

- Climate change
- Energy geopolitics
- Global supply chains
- 9/11
- Financial crisis

# Collaboration amongst Governments is reaching every facet of operations



# Governments focus on the economic health and welfare of citizens and businesses.



Public

SHARING RESULTS



Businesses

providing needed services, creating an economically sound environment and improving the quality of life for all



# Intelligent systems gather, synthesize & apply information to change the way governments and entire industries operate.



## Healthcare

Information sharing for advanced detection of possible pandemic outbreaks



## Public Safety

Information sharing to better manage border traffic, and possible internal threats

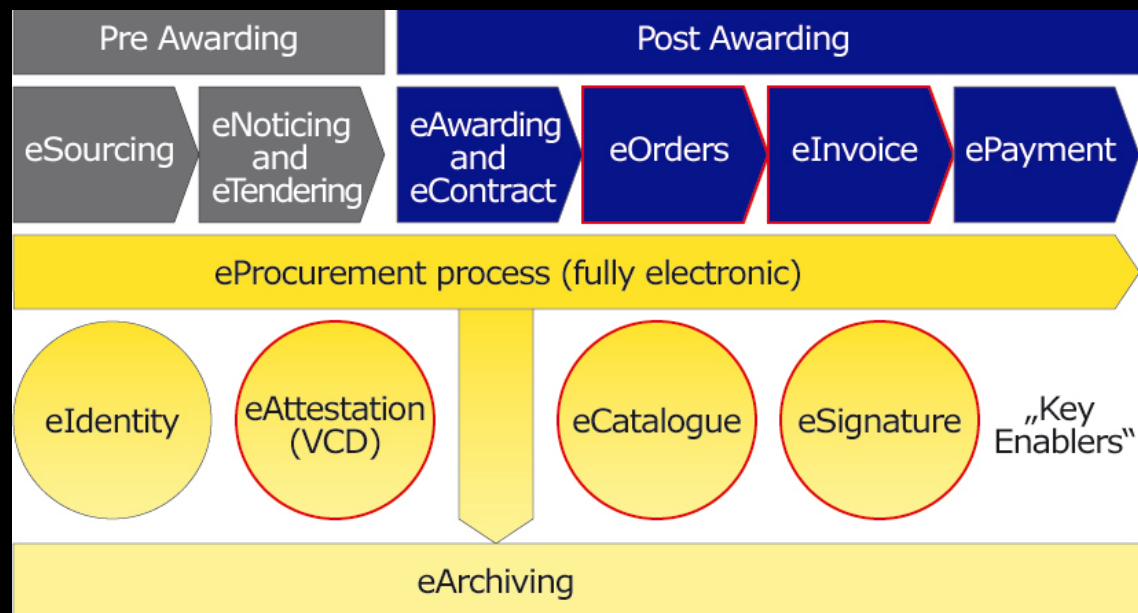
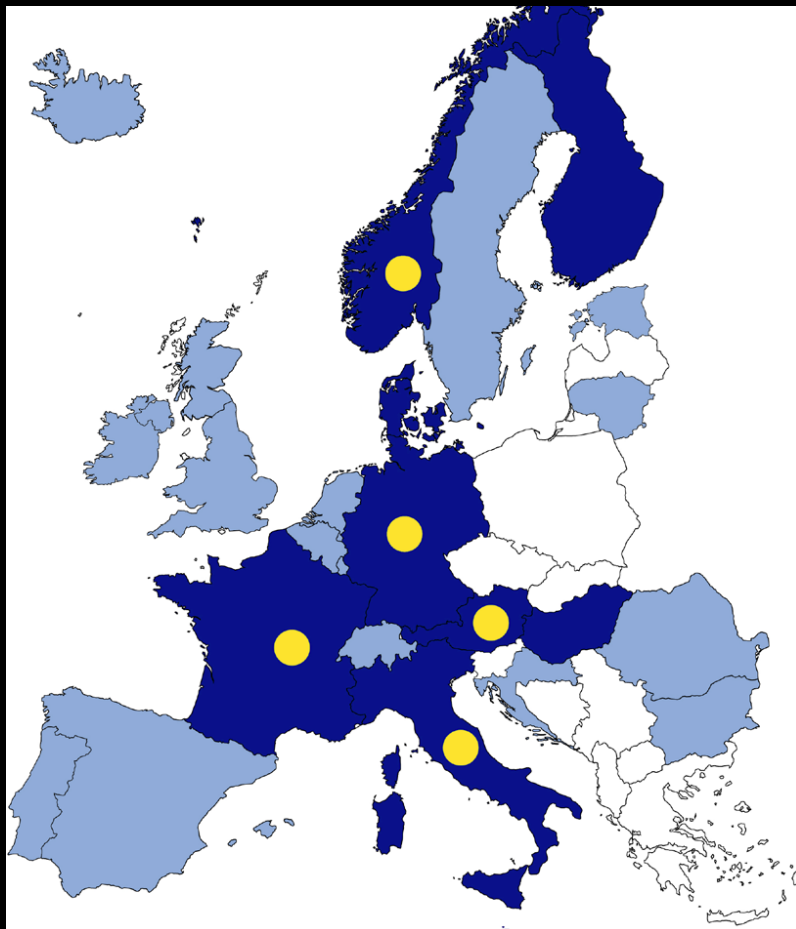


## 'Business' Operations

Analyze current processes to identify new approaches to boost efficiency and provide better service



# PEPPOL: Pan-European Public Procurement Online



Supporting open access, transparency and ease of doing business;  
Benefits competitiveness and innovation

# Client transformations in healthcare



A public healthcare organization, **Servicio Extremeño de Salud** in Spain, has built a regionally integrated system that lets patients go to many health centers within the region, knowing a doctor there can have the patients' complete, up-to-date records for faster and more accurate treatment.

# Client transformations in public safety



The **NYPD Crime Information Warehouse** gives officers mobile access to more than 120 million criminal complaints, arrests and 911 records, as well as 5 million criminal records, parole files and photographs—resulting in a 27% reduction in crime.



The **City of Madrid** has developed a new Emergency Response Center, which aggregates emergency call data and instantly alerts the proper authorities, including police, ambulance services and the fire brigade. The city has experienced a 25% reduction in response time as a result of the implementation.



# Client transformations in government services



**City of Albuquerque** introduced a performance management system that reduces manual data collection from disparate sources while enabling actionable, timely information for citizens, emergency personnel and others—realizing an initial cost savings of almost 2,000% ROI.



The **Cheshire County Council** achieved a 20% reduction in time and cost required to perform in-home senior visits, improving the ability to proactively manage the course of health and social care for senior citizens.

# The new leadership requirements:



**Open standards**

**Openness and innovation**

**Collaboration**

# The new leadership requirements:



**Open standards**

**Openness and innovation**

**Collaboration – both within  
government organizations  
and with citizens, businesses**

**These three elements are key to governments' long-term  
strategy and success.**